

CPC Valve Spring

Part No.

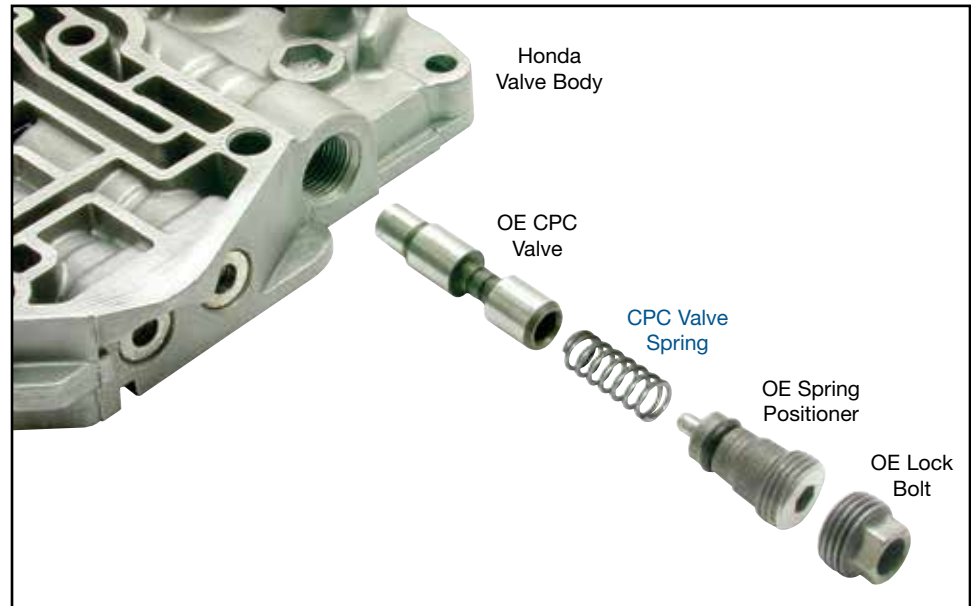
88894

NOTE: Fits '96-'99 A4RA, B4RA and M4RA.



NOTE: For use in early-style units with .260" deep spring pocket and .480" long spring.

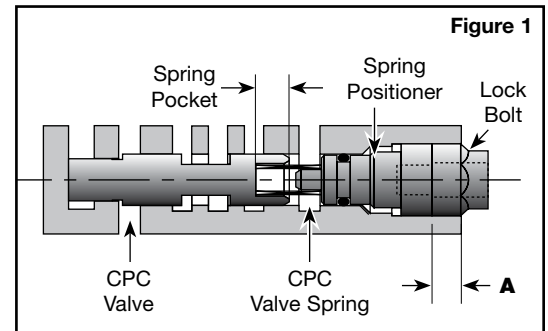
Honda/Acura 4-Speed, 2-Shaft



NOTE: The tension on OE spring is set at the factory to a specific amount, based on application. It is critical that the factory setting be measured and noted prior to removing the spring positioner.

1. Disassembly

- Remove OE lock bolt and set aside.
- Measure distance from OE casting to OE spring positioner surface (**Figure 1, dimension A**).
- Remove OE spring positioner and OE spring.
- Remove CPC valve and measure spring pocket in valve and verify it is the early-style (**Figure 2**).



NOTE: This spring is typically broken into a number of sections, so care should be taken to remove all pieces.

Figure 2

	Spring Pocket	Spring Length
Early-Style	.260"	.480"
Late-Style	.390"	.625"

2. Installation & Assembly

- Install Sonnax CPC valve spring into the spring pocket of OE CPC valve.
- Reinstall OE spring positioner, making sure that nubbed end is inserted into OE spring.
- OE positioner should be set so dimension "A" measurement (**Figure 1**) is .030" less than OE factory setting. For example, if the original factory measurement was .230", the Sonnax spring setting should be .200" (.230" minus .030").
- If OE factory setting was not taken, set the Sonnax spring setting to .195".
- Reinstall OE lock bolt.