

### CD4E, LA4A-EL Remanufactured Valve Body

(F3 Casting, with Solenoid Pack)

Part No.

**FM064**

### CD4E, LA4A-EL Remanufactured Valve Body

(F3 Casting, without Solenoid Pack)

Part No.

**FM065**

### CD4E, LA4A-EL Remanufactured Valve Body

(F7 Casting, without Solenoid Pack)

Part No.

**FM067**

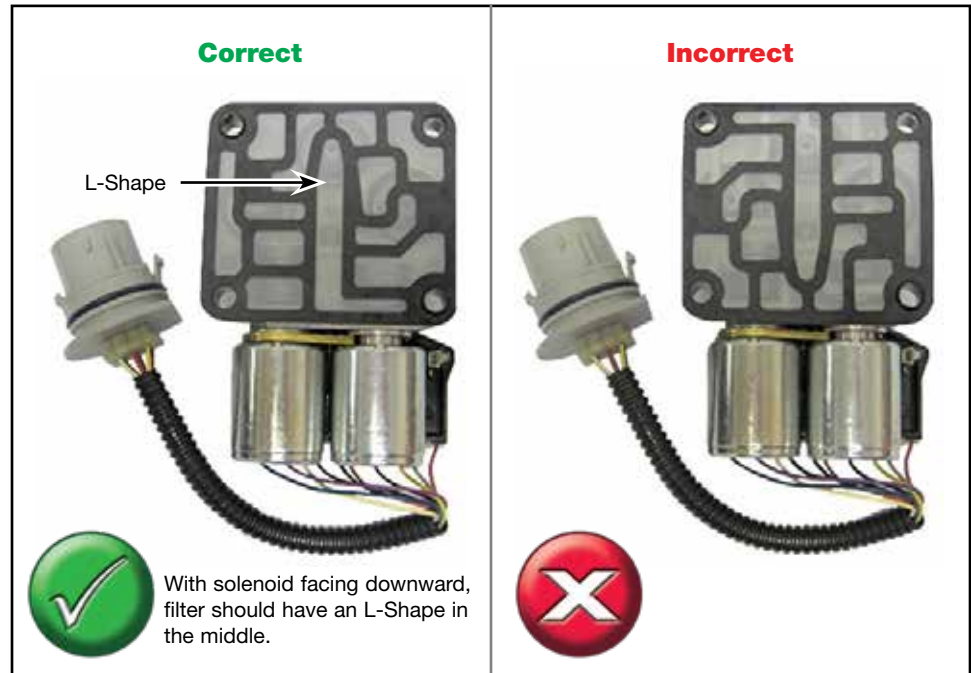
### CD4E, LA4A-EL Remanufactured Valve Body

(F7 Casting, with Solenoid Pack)

Part No.

**FM068**

## Gasket Installation



The CD4E, LA4A-EL solenoid pack gasket can be installed two ways, but only one is correct. Installing the solenoid pack gasket incorrectly can cause delayed Reverse, no upshifts and/or wrong gear starts.