

## GM 6L90

### Heavy Duty 4-5-6 Clutch Hub & Intermediate Shaft

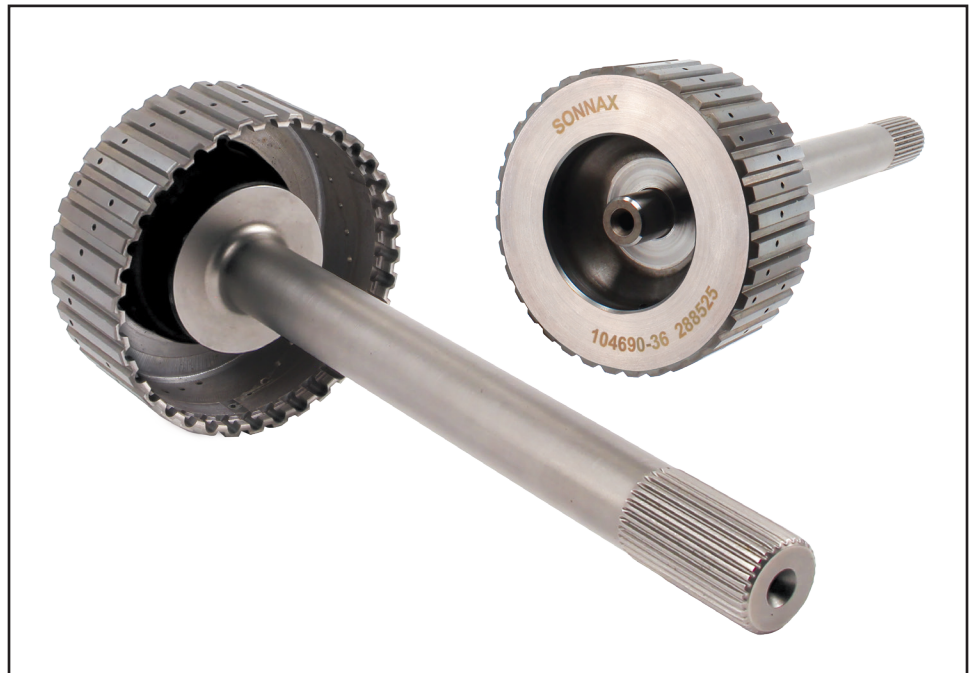
Part No.  
**104690-36**

Patent Pending

**NOTE:** For use with OE steels and 36-tooth frictions. OE Part No. 24230480.



**WARNING:** The 4-5-6 hub shaft to 1-2-3-4 clutch hub thrust bearing race must be pried off the OE shaft and transferred onto the Sonnax shaft.



### 4-5-6 Clutch Improved Oil Flow

Use a razor blade to carefully remove friction material from four of the twenty oil grooves of the front of the dampener (**Figure 1**).

