

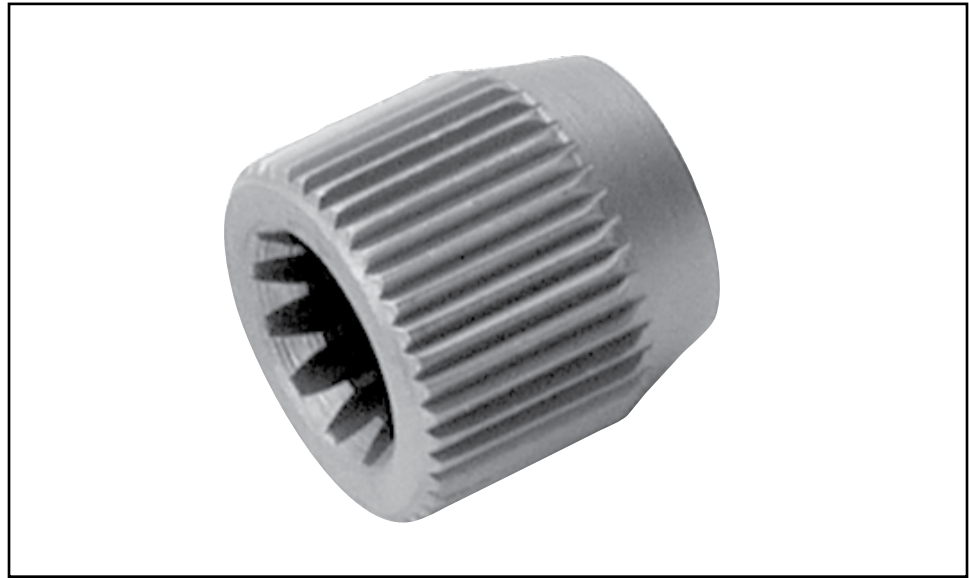


## Pump Drive Insert

Part No.

**JA-IK-12HT**

## Jatco F10 FWD, F3A, RN3F01A, Subaru 4EAT



- To install the insert, drill the damaged insert out of the front cover. The resulting hole should be .625"/.635" dia., positioned true to the pilot.
- Line up the insert and use the camfer to guide it into the hole. Use a hydraulic press or an arbor press to press the the insert into the hole.
- The insert should be flush with the inside surface of the front cover after installation.  
**OPTIONAL:** Weld the insert for added strength. Minimize the heat to the part to avoid softening or distorting the splines.
- Check pilot sizing, especially with small pilot units, ensure pilot expansion has not occurred.

