

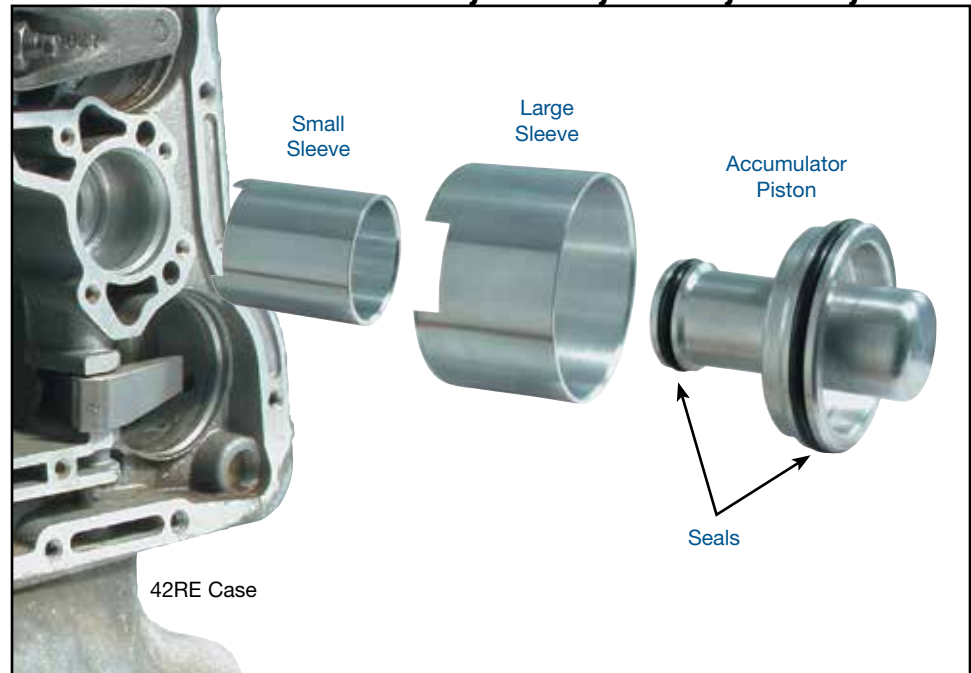
**Chrysler 42RE, 42RH, 46RE, 46RH,
47RE, 47RH, 48RE, A727, A904**

**Intermediate
Accumulator
Sleeve Kit**

Part No.

22841-01K

- Accumulator Piston
- Sleeve, Small
- Sleeve, Large
- Seal, Small
- Seal, Large



1. Disassembly

Remove any raised metal on either accumulator bore.

2. Bore Preparation

- Clean bore thoroughly to remove any dirt, grit or grease and remember to use a Loctite[®] compatible solvent.
- Scuff the O.D. of the sleeves to allow better Loctite[®] adhesion.
- Apply Loctite[®] 660 into any deep gouges in the smaller bore, and then apply a thin coat of Loctite[®] around the smaller sleeve.

3. Installation

- Align the sleeve cutout with the feed hole coming in from the side of the bottom of the bore (**Figure 1**). Some applications will have the feed hole coming up from the bottom of the bore; in this case the sleeve does not need to be indexed (**Figure 2**).
- Using a properly sized arbor, carefully drive in the small sleeve.
- Repeat steps a–b to install the large sleeve into the large bore.
- Allow Loctite[®] to cure following the manufacturer's instructions.
- Install the Sonnax piston following normal build procedures.

NOTE: If the unit has a spring at the small diameter of the accumulator piston, it must be discarded. The spring will not fit into the Sonnax piston.

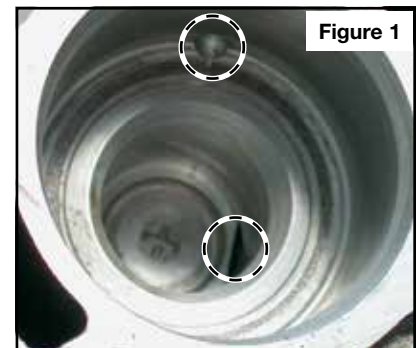


Figure 1

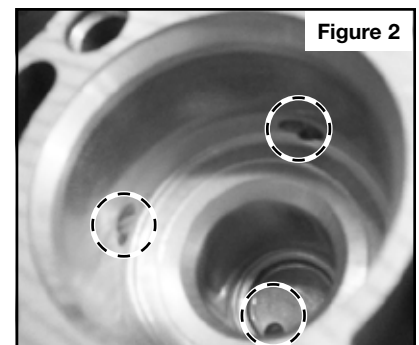


Figure 2