

## Oversized Converter Limit or Converter Charge Control Valve Kit

**Part No.**  
**95200-08K**



- Valve (1)
- Converter Limit Spring (1)      White
- Converter Charge Control Spring (1)      Blue

**NOTE:** Fits both MP-6 and MP-7 units, 1991–2002. Kit contains one valve which can be used in either bore with proper selective spring.

## Tool Kit

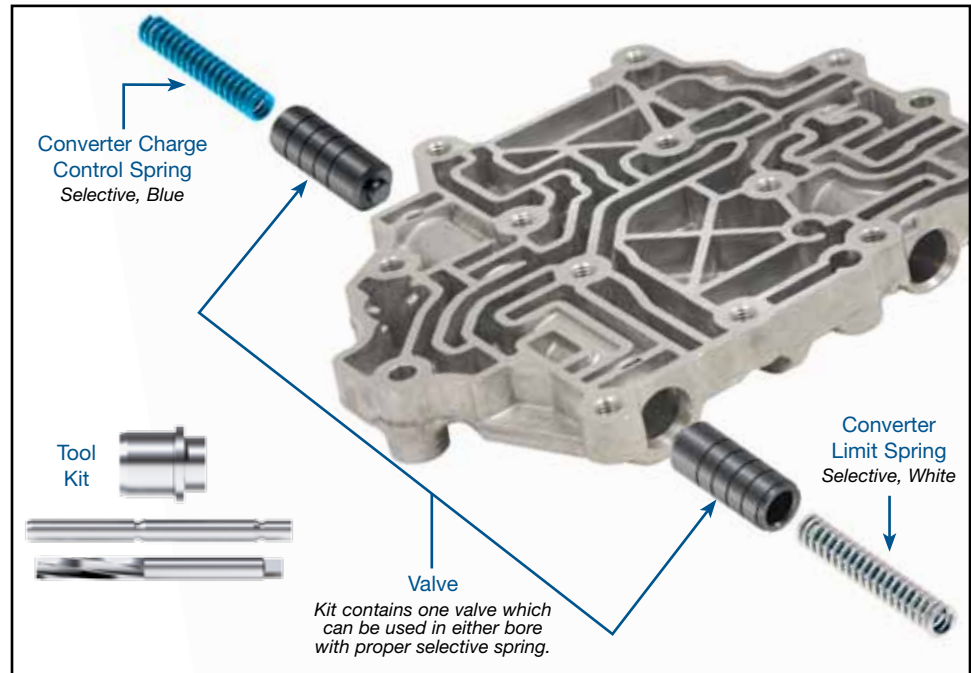
**Part No.**  
**F-95200-TL8**



- Reamer
- Reamer Jig
- Guide Pin

**NOTE:** Sonnax “F-Tool” kits designed to service a specific bore require the VB-FIX, a self-aligning valve body reaming fixture. More information and instructions can be found online at [www.sonnax.com](http://www.sonnax.com).

## Saturn TAAT



### 1. Disassembly

- Remove the OE retaining clip and save for reuse.
- Remove OE spring and valve and discard.

### 2. Bore Preparation

- Clean the bore thoroughly in a solvent tank.
- Generously lubricate the bore and reamer with cutting fluid (i.e. Mobilmet S-122, Lubgard<sup>®</sup> Bio-Tap, Tap Magic<sup>™</sup>, etc.). For best results, provide a continuous flow of water-soluble cutting fluid (i.e. Mobilmet S-122) during the reaming process.
- The reamers should be turned using a low RPM, high-torque air drill regulated to a maximum of 200 RPM.
- Examine the bore after cleaning for surface finish, debris and burrs. Flashing and burrs on the exit side of land and in bores must be carefully removed. A small piece of Scotch-Brite<sup>™</sup> material attached to a wire and powered with a drill motor is ideal for the task. Scotch-Brite<sup>™</sup> is a very abrasive material and all residual debris must be cleaned to ensure particles do not migrate or remain imbedded into the surface. Post cleaning involves several progressive steps with solvent on a lint-free rag.

### CAUTIONS AND SUGGESTIONS:

- Turning the reamer backward will dull it prematurely.
- Pushing on the reamer will result in poor surface finish and inadequate and sporadic material removal.
- Never use a crescent wrench, ratchet or pliers to turn the reamer.
- A dull reamer will cut a smaller hole. Reamers can be sharpened, but should only be done by a professional tool sharpener. Actual life of a Sonnax reamer before resharpening or replacing averages 50-70 bores.

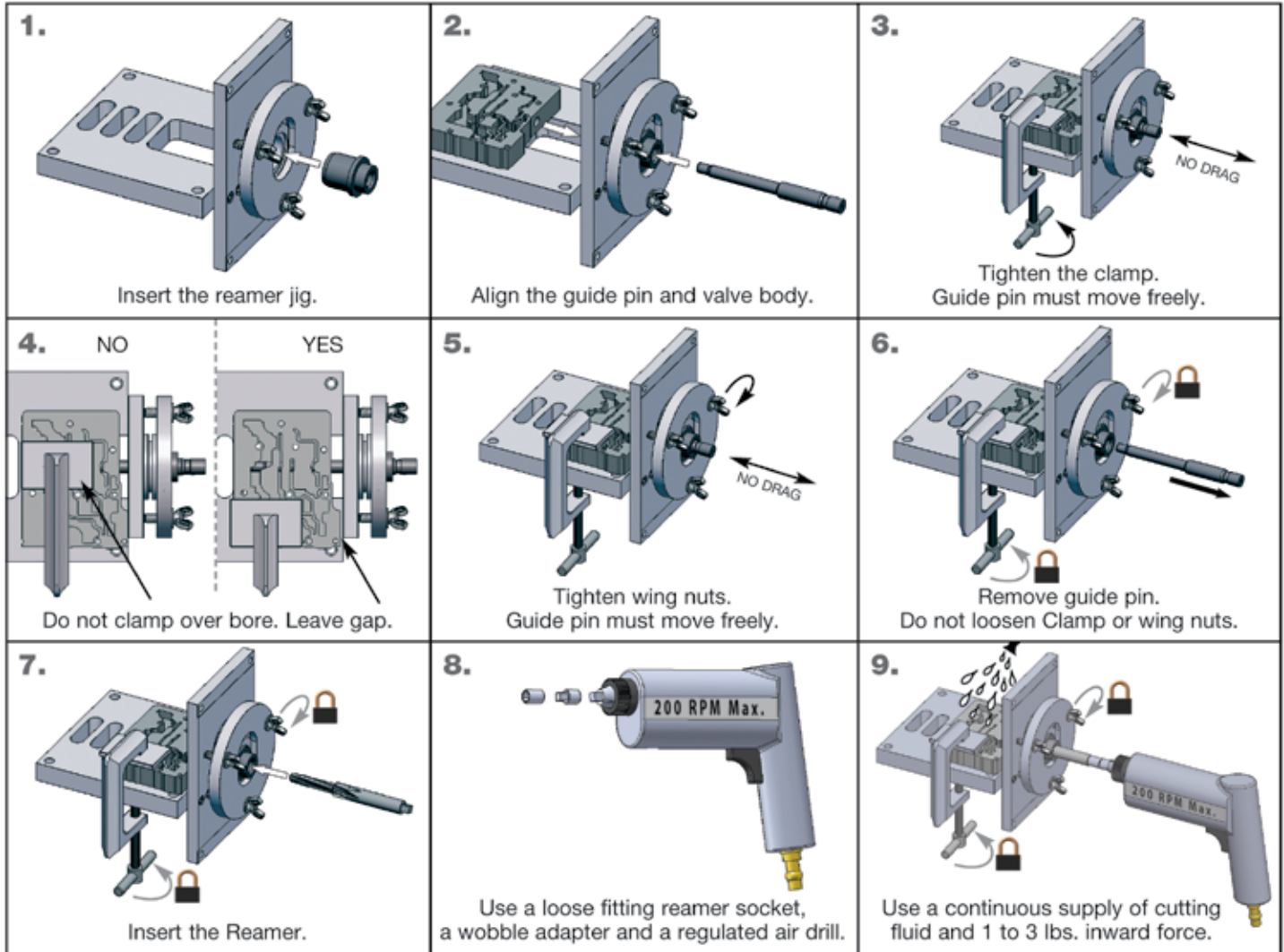
## TRANSMISSION PARTS

OVERSIZED CONVERTER LIMIT OR CONVERTER CHARGE CONTROL VALVE KIT 95200-08K, F-95200-TL8

Instructions

### 3. Bore Reaming

Use the associated "F-Tool" F-95200-TL8 kit and VB-FIX reaming fixture as illustrated below to ream the bore.



### 4. Installation & Assembly

- Install the Sonnax valve into either the converter limit bore or converter charge control bore with the spring pocket facing outboard.
- Install the Sonnax spring into the valve spring pocket.
  - Use WHITE spring for the converter limit valve location.
  - Use BLUE spring for the converter charge control valve location.
- Reinstall the OE retaining clip.

### 5. Final Testing

Vacuum tests at the ports indicated hold the recommended minimum amount of 18 in.-Hg.

