



Stator Cap

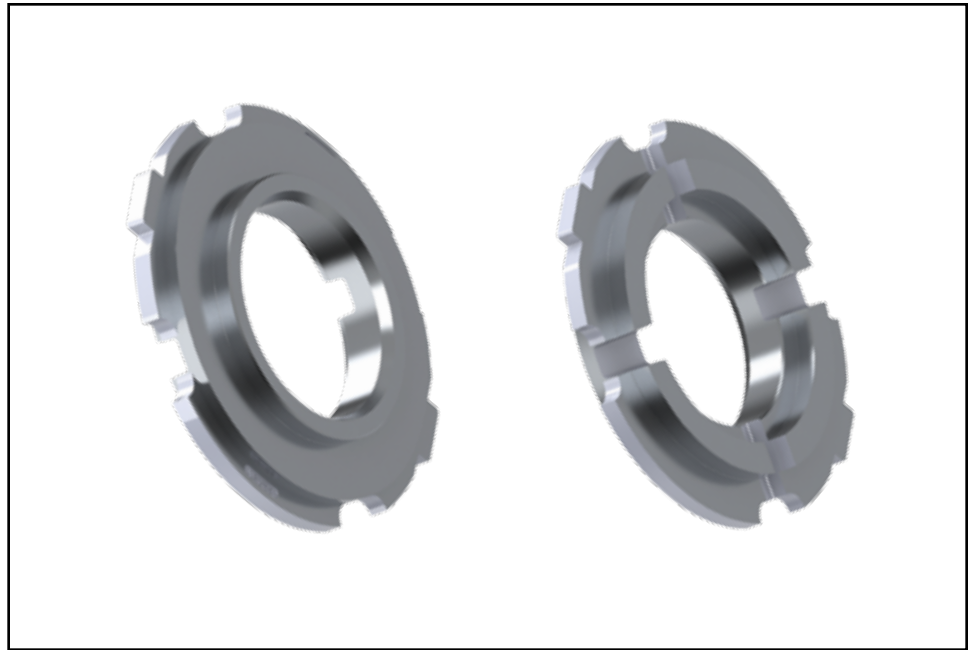
Part No.

AL-WA-7

**1000/2000/2400, Early;
1000/2000/2400, Early w/Multi-Plate Clutch Kit;
1000/2000/2400, 2006-Later;
1000/2000/2400, 2006-Later w/Multi-Plate Clutch Kit**

NOTE To maintain correct stator and overall stack heights, converting the turbine-side bearing to the **AL-N-2** using spacer **AL-WS-3** and related instructions is required.

NOTE Converts readily available early-model Aisin stator and thrust bearing **AL-N-1** for use in in later-model, hard to find stator and bearing in LuK manufactured units.



NOTE The impeller pocket is no longer needed as the bearing is now piloted on the stator cap.

1. Chuck impeller into a lathe. Using an indicator, adjust hub bearing mating surface run-out to zero or as close as possible.
2. Machine off the bearing pocket flush with bearing mating surface, removing no more than .005" material from bearing surface.
3. Leave a surface finish of 63 Ra or better.
4. Remove all burrs and smooth sharp edges.

