

Outer Reverse Modulator Valve

Part No.

37947-52

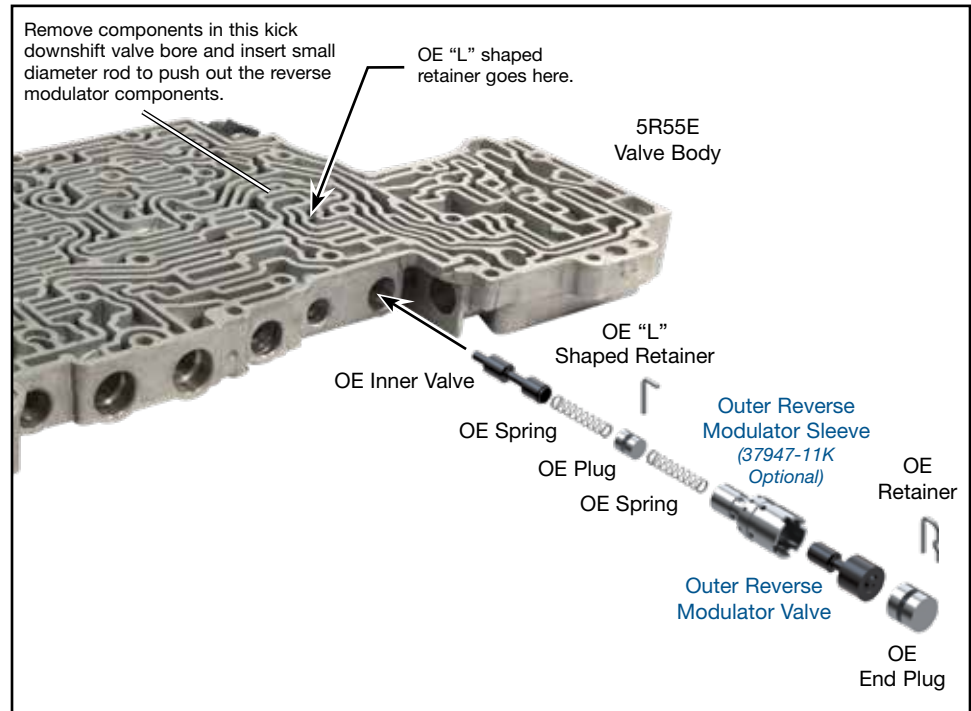
NOTE: If bore is unworn, use Sonnax valve to replace damaged or scratched OE valve. If excessive bore wear is detected, use Sonnax valve in conjunction with Sonnax sleeve in **37947-11K**. Worn or damaged OE valves used in a sleeve will not optimally restore hydraulic function.

Also Available

EPC & Engagement Control Kit
37947-11K



Ford 4R44E, 4R55E, 5R44E, 5R55E



1. Vacuum Test

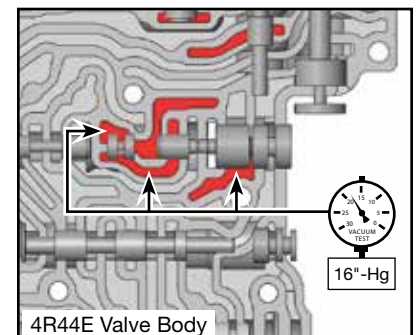
- Vacuum testing of the casting bore should be performed to look for excessive wear.
- If excessive bore wear is detected, use Sonnax EPC and engagement control kit **37947-11K**.

2. Disassembly

- Remove OE retainer and OE "L" shaped retainer.
- For ease in removal, remove valve train components in opposite kick downshift control valve bore and insert a small diameter dowel through the bore and push the reverse modulator valve bore components out.
- Perform a visual inspection of the two critical valve spools for excessive scratches. Excessively scratched valves should be replaced.

3. Installation & Assembly

- Return OE inner valve, spring and plug to bore, then return OE "L" shaped retainer to casting to engage plug.
- Discard OE outer valve.
- Insert OE spring into Sonnax outer valve spring pocket.
- Install the spring and valve into bore.
- Reinstall OE end plug and secure with OE retainer.



4. Final Testing

Vacuum testing at the port(s) indicated holds the recommended minimum 16 in-Hg.