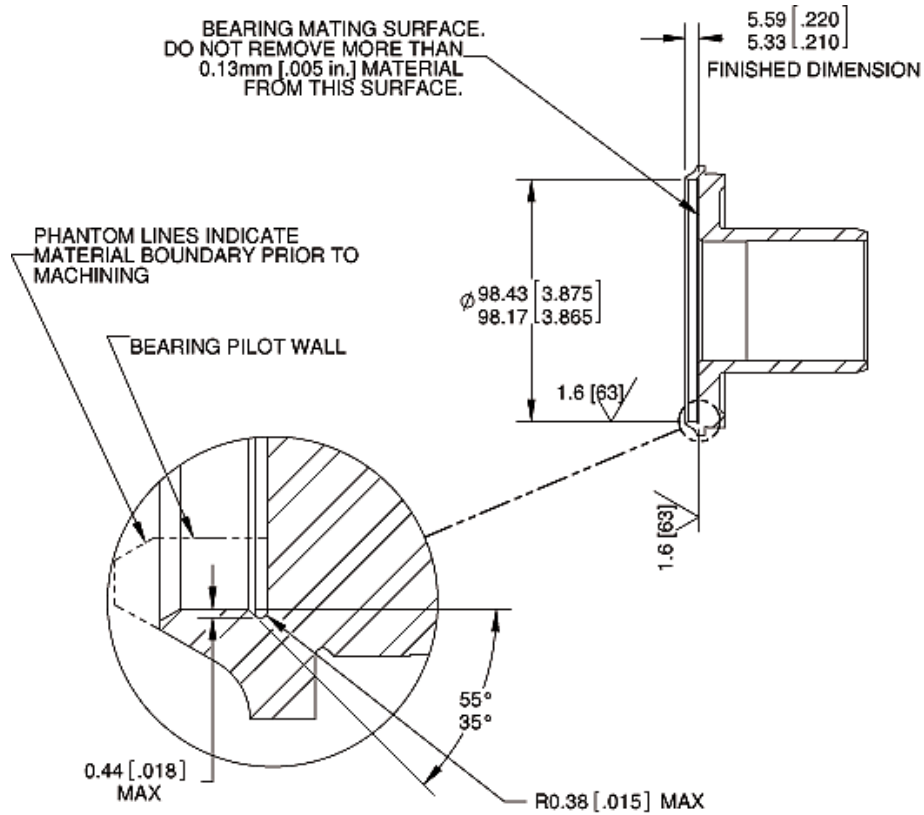




# TORQUE CONVERTER PARTS

## AL-WA-2

### STATOR CAP/BEARING ADAPTER (IMPELLER SIDE)



## INSTALLATION INSTRUCTIONS

### Impeller Hub Modification

1. Chuck the impeller onto a lathe. Using an indicator, adjust the hub bearing mating surface run-out and bearing pilot wall run-out to zero or as close as possible to zero.
2. Increase the diameter of the bearing pocket to 98.43-98.17mm (3.875-3.865").
3. Do not remove more than 0.13mm (.005") material from the hub's bearing surface.
4. Leave a surface finish of 1.6 micrometers (63 microinches) or better.
5. Undercut the inside corner as illustrated above.
6. Reduce the bearing pilot wall to new bearing mating surface to 5.59-5.33mm (.220-.210") as illustrated above.
7. Remove all burrs and break sharp edges.