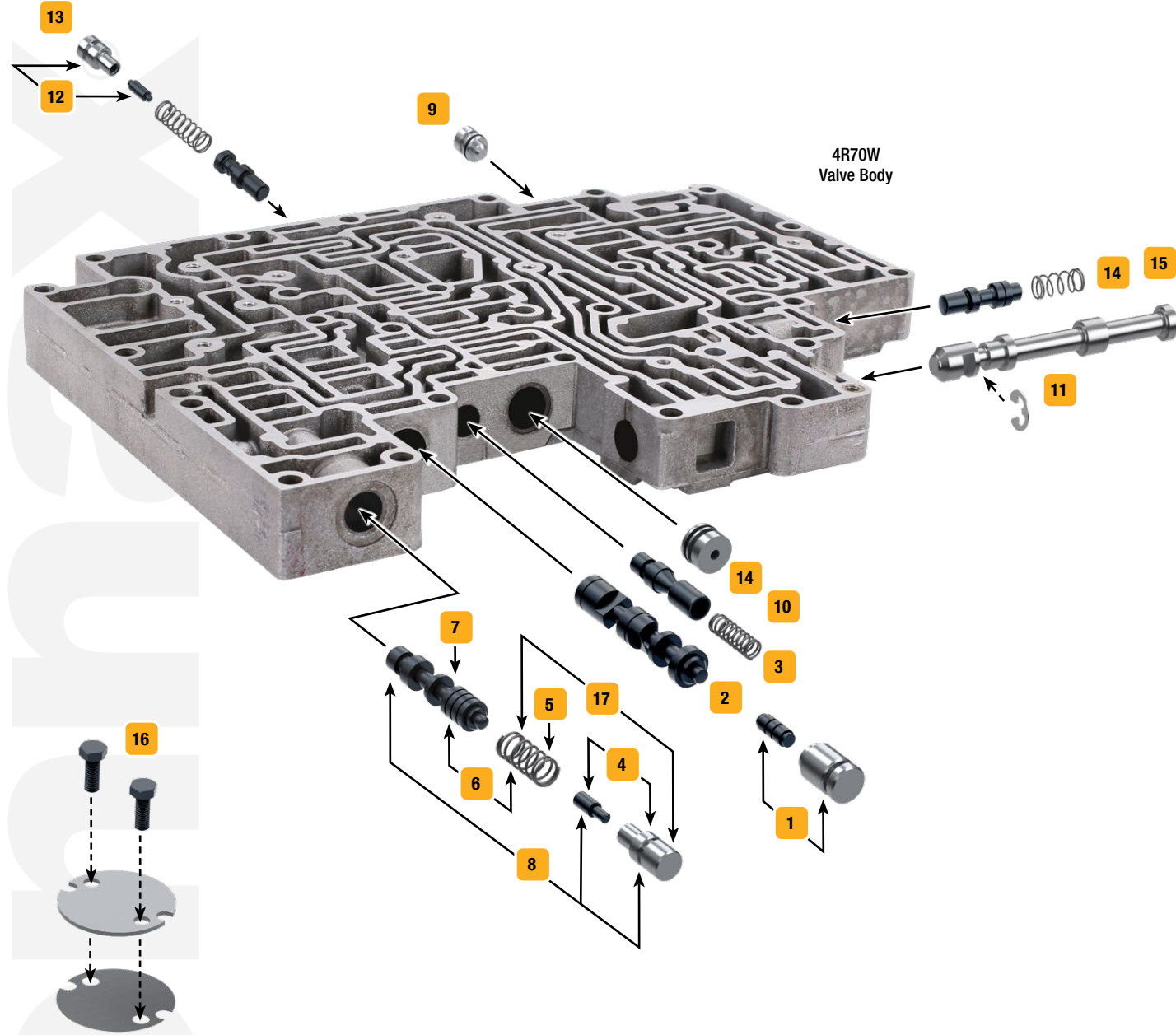


# Ford AODE, 4R70W, 4R75W, 4R70E, 4R75E



Click on part numbers for product details or visit [www.sonnax.com](http://www.sonnax.com) to see all products for the unit(s) shown here.



See kit components at [www.sonnax.com](http://www.sonnax.com).

Symptoms/Part Type	Product Name	Part No.	Details	Drop-In Zip Valve™ Parts	Tooling
<b>Multiple Symptoms</b>					
Comprehensive kit for big problems you don't want back	The Sure Cure® Kit	SC-AODE	4R70W, AODE, '95-earlier only		F-76948-TL*, 76948-TL4, 76948-BST, F-76948-TL47*
	The Sure Cure® Kit	SC-AODE-4R75E	Does not fit AODE '95-earlier		
The first step in correcting common shift problems	Zip Kit®	AODE-4R75E-ZIP	ZIP AODE, '96-later only		
<b>TCC/Lockup Symptoms</b>					
Shudder, Code 628, No lockup, TCC apply & release concerns, Delayed lockup	Bypass Clutch Control Plunger Valve Kit	1 76948-04K	ZIP		
Code 628, 741, 1741, 1744, No lockup, TCC slip, Low cooler flow	Oversized Bypass Clutch Control Valve	2 76948-31			76948-TL6, F-76948-TL6
Converter shudder & TCC slip, Low converter pressure, Overheated converter	Converter Limit Valve Kit	3 76948-56K	ZIP		
	Oversized Converter Limit Valve Kit	3 76948-58K			F-76948-TL47*
<b>Pressure Problems</b>					
Low Reverse boost, Delayed Reverse, Reverse slip, No Reverse, Low line rise in Reverse	Boost Valve Kit	4 76948-02K	ZIP '91-Later		
Soft shifts, Poor shift quality, Low base line pressure, Delayed Forward	Elevated Pressure Main Pressure Regulator Spring	5 76948-06	4R70W, AODE, '91-'95 only, 5/bag		
	Elevated Pressure Regulator Valve Kit	6 76948-12K	ZIP '96-Later		
Poor shift quality, Soft shifts, Low line rise, Erratic buzz, Premature clutch failure	Main Pressure Regulator Valve	7 76948-01	ZIP Replaces '95-earlier 4-spool valves only		
	Main Pressure Regulator Valve	7 76948-09	ZIP '96-Later		
Uncontrolled pressure in Reverse, Soft shifts, Delayed Reverse, Low line rise, Throttle buzz	Oversized Pressure Regulator & Boost Valve Kit	8 76948-16K	4R70W, AODE, '95-earlier only		F-76948-TL*, 76948-TL4, 76948-BST
	Oversized Pressure Regulator & Boost Valve Kit	8 76948-17K	'96-Later		F-76948-TL*, 76948-TL4, 76948-BST
<b>Shift/Engagement Concerns</b>					
Burnt bands, No Reverse, No 4th	O-Ringed 3-4 Shift Valve End Plug Kit	9 76948-49K	ZIP '01-Later, includes 5 end plugs		
Erratic shift timing, Oil leaks	O-Ringed End Plug Kit	10 76999-MED	ZIP Includes 3 end plugs		
Delayed engagement, Low line pressure, Burnt bands, Burnt clutches	Oversized Manual Valve Kit	11 76948-46	'92-Later, upgrades '92-'98 units to '99-later specifications		F-76948-TL46*
4-3 Neutral, No 4th, Burnt OD band	Overdrive Servo Regulator Kit	12 76948-29K	ZIP 4R70E/W, 4R75E/W '01-later only		
	Oversized Overdrive Servo Regulator Valve Kit	13 76948-59K	4R70E/W, 4R75E/W '01-later only		F-76948-TL59*
Erratic shifts, 2-3 Neutral, No 2nd, Loss of Forward under hard acceleration from a stop	Solenoid Regulator Valve Kit	14 76948-14K	ZIP		76948-BST2 †
	Oversized Solenoid Regulator Valve Kit	15 76948-47K			F-76948-TL47*
<b>Component Damage/Failure</b>					
Forward & direct clutch failure, Separator plate cracking, Cross leaks	Valve Body Retainer Plate Kit	16 76507F-01K	4R70E, 4R70W, 4R75E, 4R75W, '01-later only		
<b>High Performance/Heavy Duty Upgrades</b>					
Classic, large-ratio boost valve for crisp, clean shifts without harshness	Line Pressure Booster Kit	17 4R70W-LB1	ZIP Unique design improves performance in Forward & Reverse while preventing runaway line pressure		
<b>Tools</b>					
	Vacuum Test Plate Kit	76948-VTP			VACTEST-01K

\* VB-FIX Required

† Recommended Tool