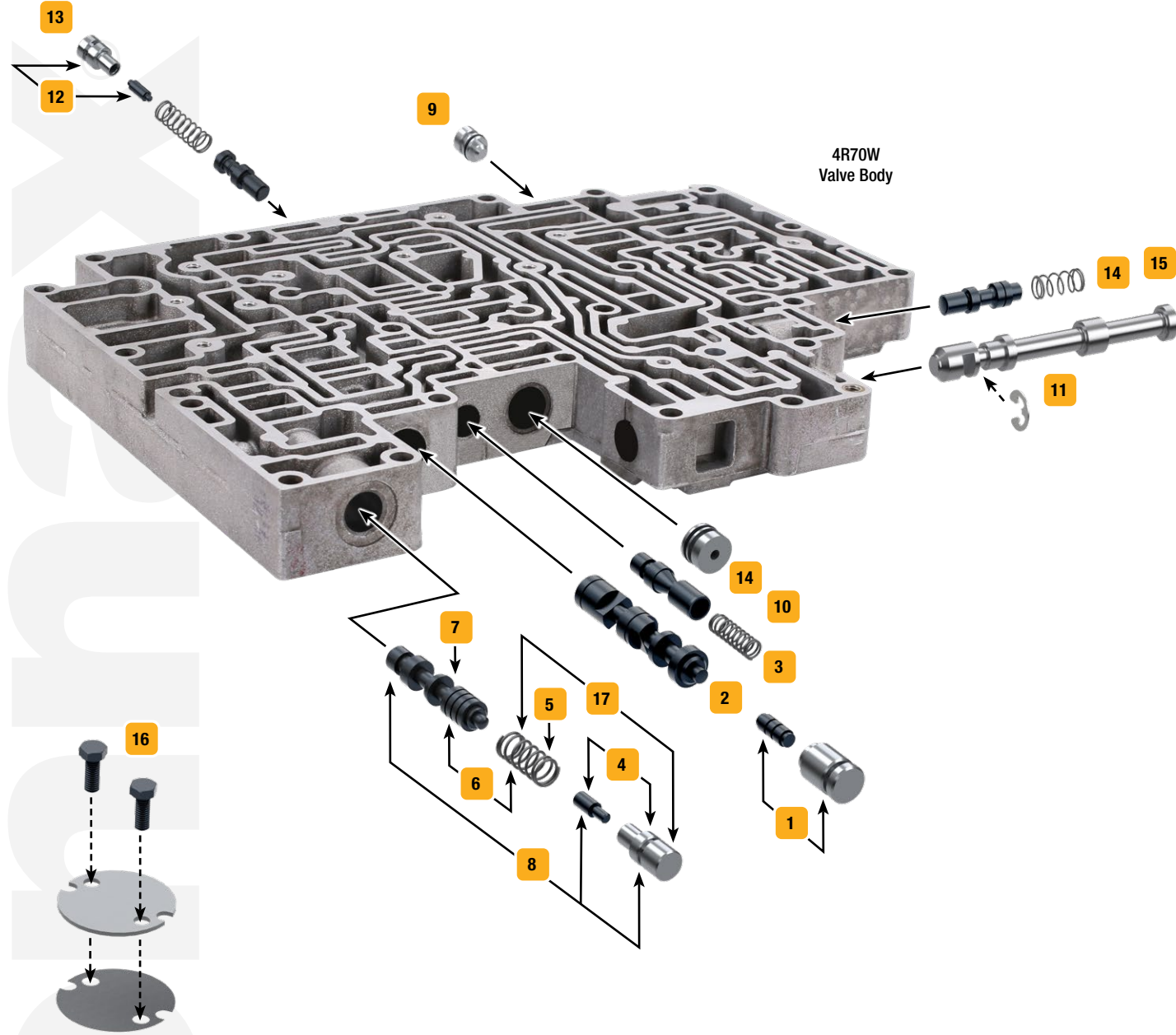


Ford AODE, 4R70W, 4R75W, 4R70E, 4R75E



Click on part numbers for product details or visit www.sonnax.com to see all products for the unit(s) shown here.



See kit components at www.sonnax.com.

Symptoms/Benefits	Product Name	Part No.	Details	ZIP Drop-In Zip Valve™ Parts	Tooling
Multiple Symptoms					
Comprehensive kit for big problems you don't want back	The Sure Cure® Kit	SC-AODE	4R70W, AODE, '95-earlier only		F-76948-TL*, 76948-TL4, 76948-BST, F-76948-TL47*
	The Sure Cure® Kit	SC-AODE-4R75E	Does not fit AODE '95-earlier		
The first step in correcting common shift problems	Zip Kit®	AODE-4R75E-ZIP	ZIP 4R70E/W, 4R75E/W, '96-later AODE only		
TCC/Lockup Symptoms					
Shudder, Code 628, No lockup, TCC apply & release concerns, Delayed lockup	Bypass Clutch Control Plunger Valve Kit	1 76948-04K	ZIP Single .030" orifice sleeve design		
	Bypass Clutch Control Plunger Valve Kit	1 76948-64K	ZIP Four .063" orifices to match OE sleeve design		
Code 628, 741, 1741, 1744, No lockup, TCC slip, Low cooler flow	Oversized Bypass Clutch Control Valve	2 76948-31			76948-TL6, F-76948-TL6*
Converter shudder & TCC slip, Low converter pressure, Overheated converter	Converter Limit Valve Kit	3 76948-56K	ZIP		
	Oversized Converter Limit Valve Kit	3 76948-58K			F-76948-TL47*
Pressure Problems					
Low Reverse boost, Delayed Reverse, Reverse slip, No Reverse, Low line rise in Reverse	Boost Valve Kit	4 76948-02K	ZIP '91-Later		
Soft shifts, Poor shift quality, Low base line pressure, Delayed Forward	Elevated Pressure Main Pressure Regulator Spring	5 76948-06	4R70W, AODE '91-'95 only, 5/bag		
	Elevated Pressure Regulator Valve Kit	6 76948-12K	ZIP '96-Later		
Poor shift quality, Soft shifts, Low line rise, Erratic buzz, Premature clutch failure	Main Pressure Regulator Valve	7 76948-01	ZIP Replaces '95-earlier 4-spool valves only		
	Main Pressure Regulator Valve	7 76948-09	ZIP '96-Later		
Uncontrolled pressure in Reverse, Soft shifts, Delayed Reverse, Low line rise, Throttle buzz	Oversized Pressure Regulator & Boost Valve Kit	8 76948-16K	4R70W, AODE '95-earlier only		F-76948-TL*, 76948-TL4, 76948-BST
	Oversized Pressure Regulator & Boost Valve Kit	8 76948-17K	'96-Later		F-76948-TL*, 76948-TL4, 76948-BST
Shift/Engagement Concerns					
Burnt bands, No Reverse, No 4th	O-Ringed 3-4 Shift Valve End Plug Kit	9 76948-49K	ZIP '01-Later, includes 5 end plugs		
Erratic shift timing, Oil leaks	O-Ringed End Plug Kit	10 76999-MED	ZIP Includes 3 end plugs		
Delayed engagement, Low line pressure, Burnt bands, Burnt clutches	Oversized Manual Valve Kit	11 76948-46	'92-Later, upgrades '92-'98 units to '99-later specifications		F-76948-TL46*
4-3 Neutral, No 4th, Burnt OD band	Overdrive Servo Regulator Kit	12 76948-29K	ZIP 4R70E/W, 4R75E/W, '01-later only		
	Oversized Overdrive Servo Regulator Valve Kit	13 76948-59K	4R70E/W, 4R75E/W, '01-later only		F-76948-TL59*
Erratic shifts, Loss of Forward under hard acceleration from a stop, 2-3 Neutral, No 2nd	Solenoid Regulator Valve Kit	14 76948-14K	ZIP		76948-BST2 †
	Oversized Solenoid Regulator Valve Kit	15 76948-47K			F-76948-TL47*
Component Damage/Failure					
Forward & direct clutch failure, Separator plate cracking, Cross leaks	Valve Body Retainer Plate Kit	16 76507F-01K	4R70E/W, 4R75E/W '01-later only		
High Performance/Heavy Duty Upgrades					
Classic, large-ratio boost valve for crisp, clean shifts without harshness	Line Pressure Booster Kit	17 4R70W-LB1	ZIP Unique design improves performance in Forward & Reverse while preventing runaway line pressure		
Tools					
	Vacuum Test Plate Kit	76948-VTP			VACTEST-01K

* VB-FIX Required

† Recommended Tool