

Critical Wear Areas & Vacuum Test Locations

ZIP Drop-In Zip Valve™ Parts Available

ZIP KIT 10L80-G1-10R80-ZIP Zip Kit® Available

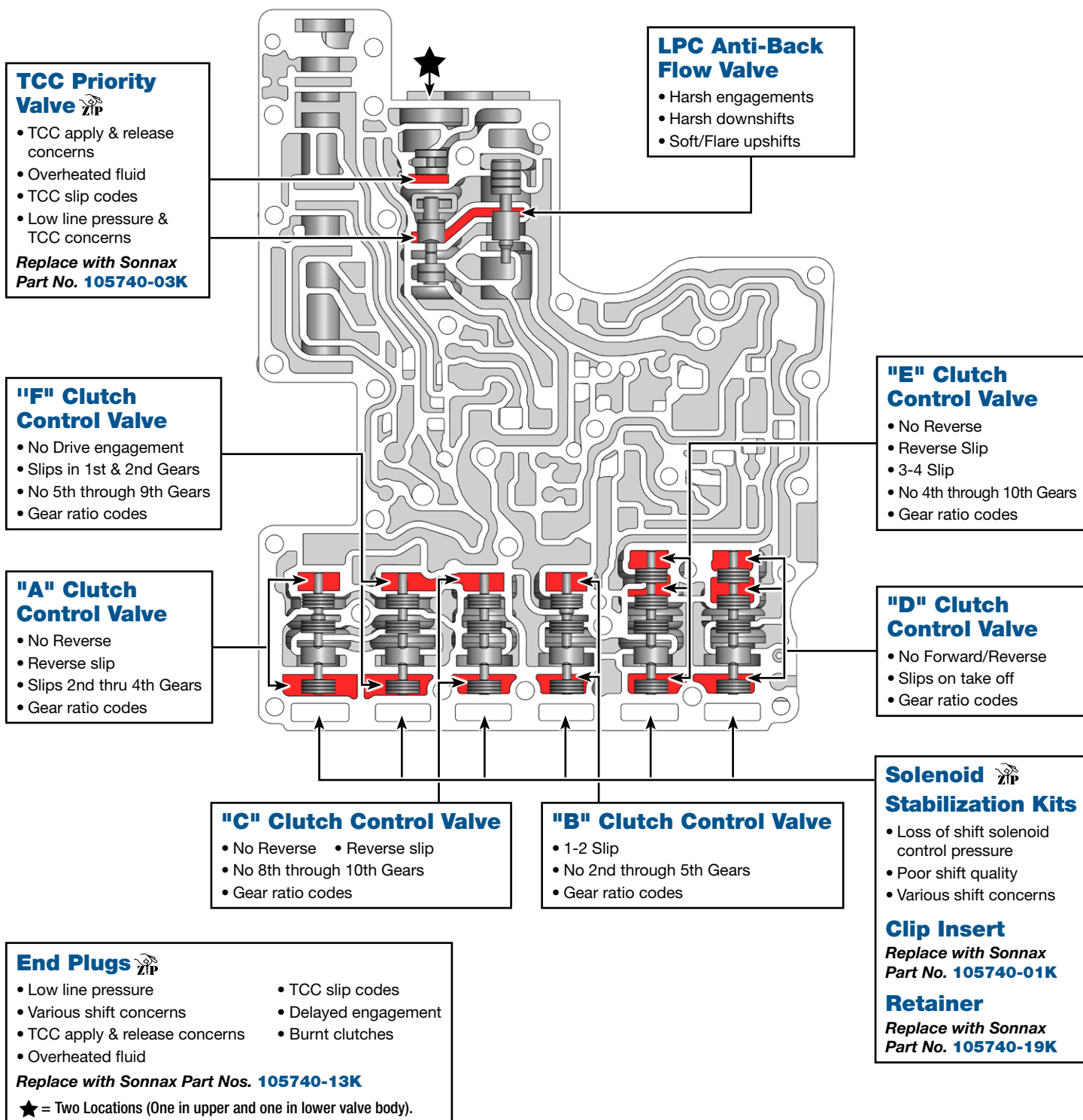
NOTE: OE valves are shown in rest position and should be tested in rest position unless otherwise indicated. Test locations are pointed to with an arrow. Springs are not shown for visual clarity. Low vacuum reading indicates wear and Sonnax parts are noted for replacement.

Lower Valve Body • 10R80 Shown



For specific vacuum test information, refer to individual part instructions included in kits and available at www.sonnax.com.

Click on Sonnax part numbers to see more information.



Critical Wear Areas & Vacuum Test Locations

ZIP Drop-In Zip Valve™ Parts Available

ZIP KIT 10L80-G1-10R80-ZIP Zip Kit® Available

NOTE: OE valves are shown in rest position and should be tested in rest position unless otherwise indicated. Test locations are pointed to with an arrow. Springs are not shown for visual clarity. Low vacuum reading indicates wear and Sonnax parts are noted for replacement.

Upper Valve Body • 10R80 Shown



For specific vacuum test information, refer to individual part instructions included in kits and available at www.sonnax.com.

Click on Sonnax part numbers to see more information.

F Clutch Latch

- Delayed/Harsh Reverse
- No 4th through 10th Gears
- Gear ratio codes

Repair with Sonnax Part No. **105740-47K**

A Clutch Latch

- No Forward/Reverse
- Harsh engagements
- Gear ratio codes

Repair with Sonnax Part No. **105740-47K**

B Clutch Latch

- Poor Reverse engagement
- No 8th through 10th Gears
- Gear ratio codes

Repair with Sonnax Part No. **105740-47K**

C Clutch Latch

- 1-2 Slip
- No 2nd through 5th Gears
- Gear ratio codes

Repair with Sonnax Part No. **105740-47K**

Bypass Valve

- Overheated fluid
- Lube failure
- Low cooler flow
- Overheating
- Low pressure-to-balance pistons

Lube Control Valve

- Overheated fluid
- Lube failure
- Low cooler flow
- Overheating
- Low pressure-to-balance pistons

End Plugs

- Low line pressure
- Various shift concerns
- TCC apply & release concerns
- Overheated fluid
- TCC slip codes
- Delayed engagement
- Burnt clutches

Replace with Sonnax Part Nos. **105740-13K**

★ = Two Locations (One in upper and one in lower valve body).

Clutch Gain Control Valve

- 4/5 Harsh/Flare
- Harsh 6th to 4th gear downshifts/passing gear
- Passing gear flare back to 4th

TCC Regulator Valve

- TCC apply & release concerns
- Low TCC apply pressure in full lockup
- Converter shudder & TCC slip

Replace with Sonnax Part Nos. **105740-15K** Fits Ford 10R60/80/90
or **105740-16K** Fits GM 10L60/80/90 (Gen. 1)
or **105740-17K** Fits GM 10L60/80/90 (Gen. 2)
All Require **F-105740-TL16 & VB-FIX**

Main Pressure Regulator Valve

- Low line pressure
- Various shift concerns
- Delayed engagement
- Poor shift quality
- Burnt clutches
- TCC apply & release concerns

Replace with Sonnax Part Nos. **105740-12K** or **105740-20K**
Requires **F-105740-TL20 & VB-FIX**

LPC Signal Damper Piston

- Harsh shifts
- High line pressure

Replace with Sonnax Part Nos. **105740-04K**

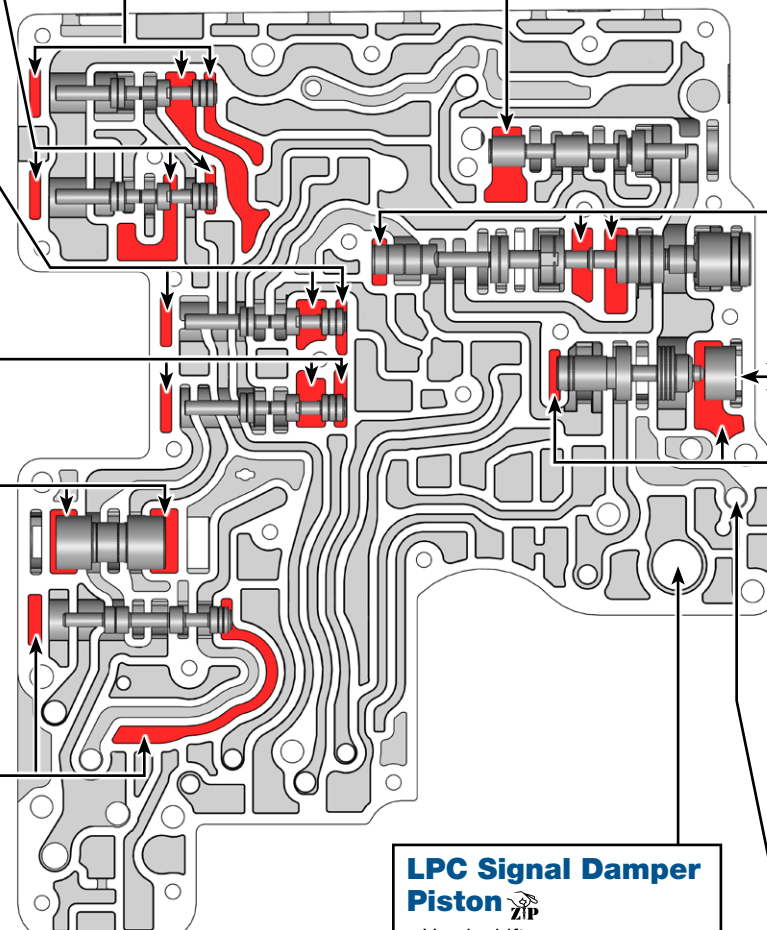
NOTE: Keep hole on backside of valve body uncovered while testing.

TCC Signal Damper Piston

- Lube failures
- TCC apply & release concerns
- Overheated fluid
- Overheated converter
- Delayed engagement

Replace with Sonnax Part No. **105740-06K**

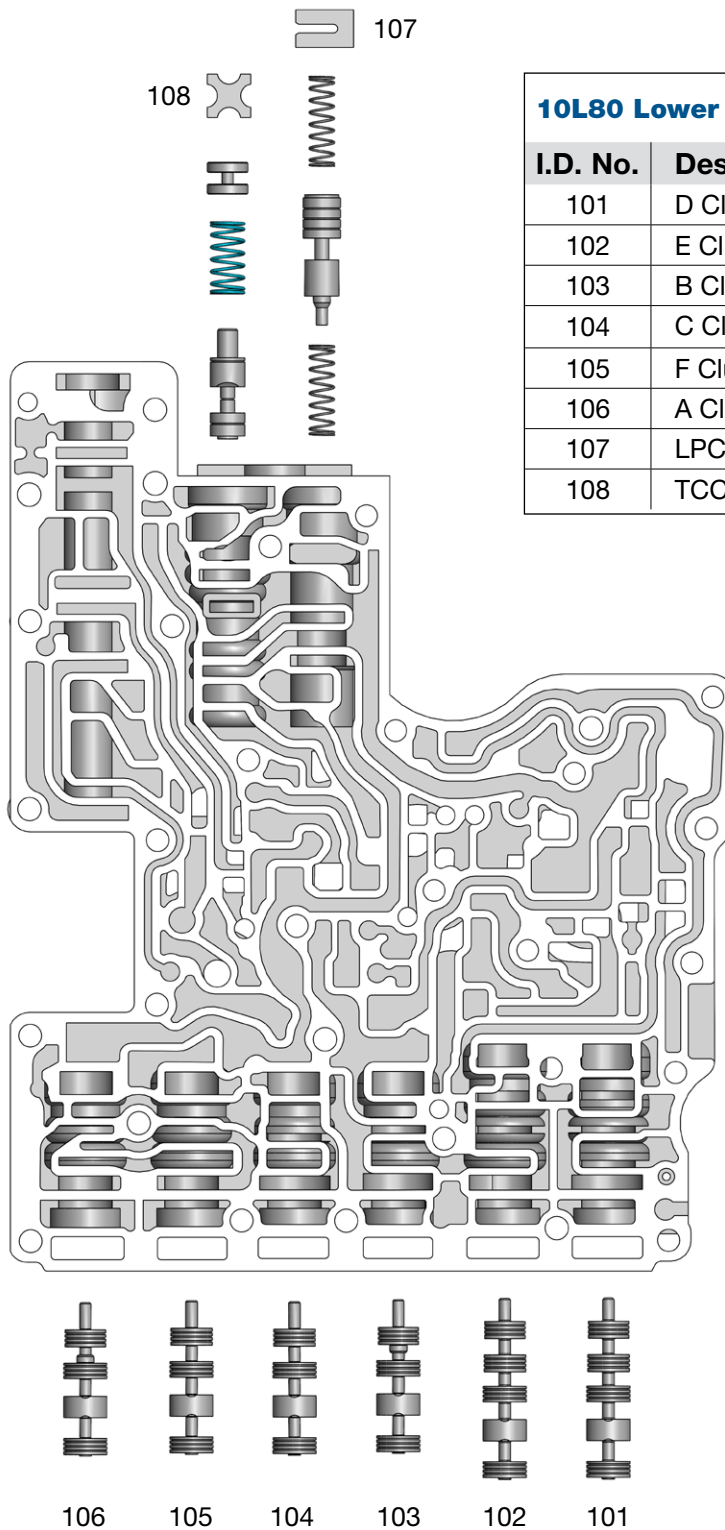
NOTE: Keep hole on backside of valve body uncovered while testing.



OE Exploded View

Lower Valve Body • 10L80 (Gen. 1) Shown

NOTE: Depending upon vehicle application, the OE springs shown may not be present.

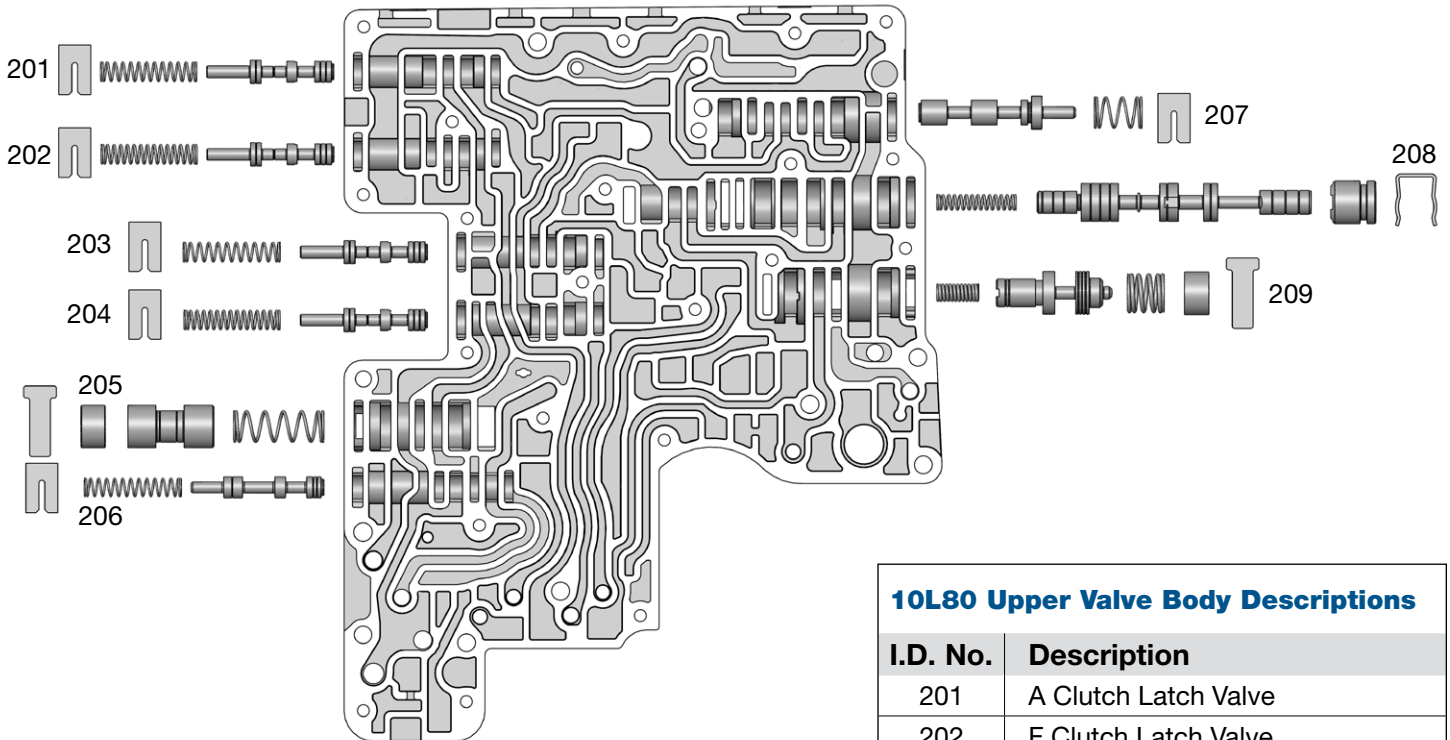


10L80 Lower Valve Body Descriptions	
I.D. No.	Description
101	D Clutch Control Valve
102	E Clutch Control Valve
103	B Clutch Control Valve
104	C Clutch Control Valve
105	F Clutch Control Valve
106	A Clutch Control Valve
107	LPC Anti-Back Flow Valve
108	TCC Priority Valve

OE Exploded View

Upper Valve Body • 10L80 (Gen. 1) Shown

NOTE: Depending upon vehicle application, the OE springs shown may not be present.



10L80 Upper Valve Body Descriptions

I.D. No.	Description
201	A Clutch Latch Valve
202	F Clutch Latch Valve
203	B Clutch Latch Valve
204	C Clutch Latch Valve
205	Bypass Valve
206	Lube Control Valve
207	Clutch Gain Control Valve
208	TCC Regulator Valve
209	Main Regulator Valve