

Critical Wear Areas & Vacuum Test Locations

Drop-In Zip Valve™
Parts Available

ZF6-6R60-ZIP
Zip Kit® Available

NOTE: OE valves are shown in rest position and should be tested in rest position unless otherwise indicated. Test locations are pointed to with an arrow. Springs are not shown for visual clarity. Low vacuum reading indicates wear and Sonnax parts are noted for replacement.

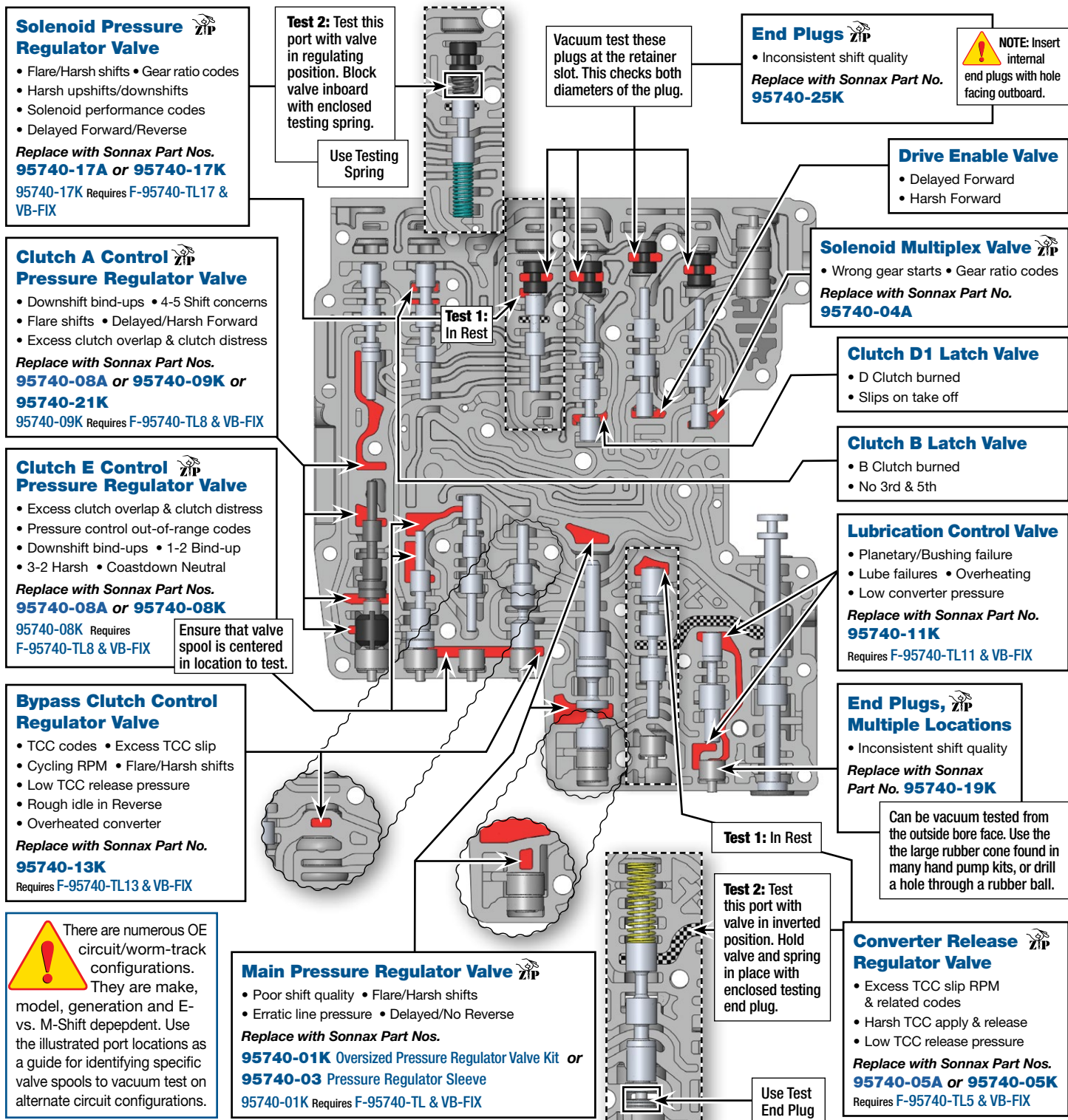
Lower Valve Body • Jaguar ZF6HP26, M-Shift

NOTE: ZF6HP19/26/32 (Gen. 1) applications with an 053 separator plate have significantly different valve line-ups and locations. Reference [Vacuum Test Guide for 053 plate](#) for test locations and replacement parts.



For specific vacuum test information, refer to individual part instructions included in kits and available at www.sonnax.com.

Click on Sonnax part numbers to see more information.



Critical Wear Areas & Vacuum Test Locations

ZIP Drop-In Zip Valve™
Parts Available

ZIP KIT ZF6-6R60-ZIP
Zip Kit® Available

NOTE: OE valves are shown in rest position and should be tested in rest position unless otherwise indicated. Test locations are pointed to with an arrow. Springs are not shown for visual clarity. Low vacuum reading indicates wear and Sonnax parts are noted for replacement.

Upper Valve Body • Jaguar ZF6HP26, M-Shift



For specific vacuum test information, refer to individual part instructions included in kits and available at www.sonnax.com.

Click on Sonnax part numbers to see more information.

NOTE: ZF6HP19/26/32 (Gen. 1) applications with an 053 separator plate have significantly different valve line-ups and locations. Reference [Vacuum Test Guide for 053 plate](#) for test locations and replacement parts.

Accumulator Pistons

- Downshift clunk • Firm shifts
- Erratic EDS solenoid control/EDS codes

Replace with **Sonnax Part No. 95740-15K**

OE accumulator pistons should be flush with the casting. It is common for the rubber insert to lose tension.

Each of these pistons can be vacuum tested from the exhaust hole on the opposite side of the casting.

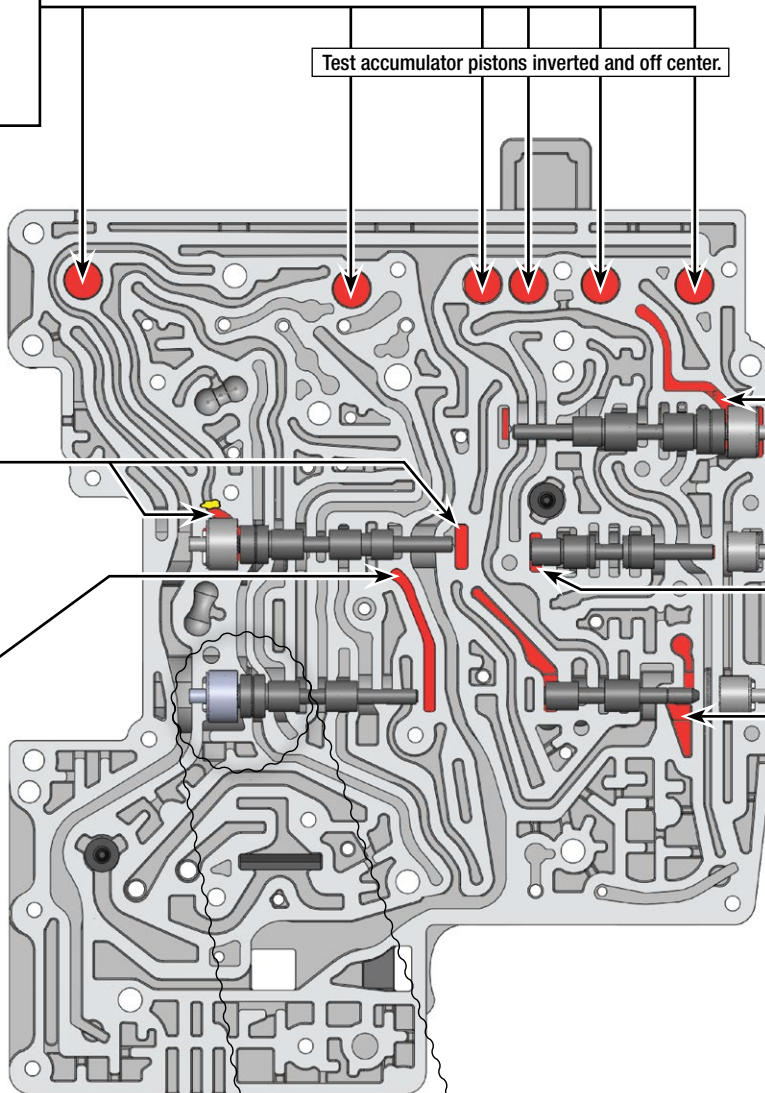
Clutch C Regulator Valve

- 2nd & 6th Slip
- Clutch failure
- Poor shift quality
- Ratio errors

Replace with **Sonnax Part No. 95740-40K**

Requires F-95740-TL40 & VB-FIX

Test accumulator pistons inverted and off center.



Clutch B Regulator Valve

- B Clutch burned
- 3rd & 5th Slips
- Slips in Reverse

Clutch D2 Regulator Valve

- 1-2 Bind-up
- Downshift clunk
- D Clutch burned

Clutch D2 Latch Valve

- Downshift clunk
- 1-2 Bind-up

Clutch D1 Control Pressure Regulator Valve*

- Bumpy 1-2 upshift
- 2-1 Downshift flare or neutral
- EDS 3 control code

Replace with **Sonnax Part Nos. 95740-08A or 95740-08K**

95740-08K Requires F-95740-TL8 & VB-FIX

*6R80 applications, 2012-later, have a different design clutch D1 pressure regulator valve. Sonnax part 95740-08K will not work in that application. A quick identification of this valve body is lack of clutch D2 latch valve.

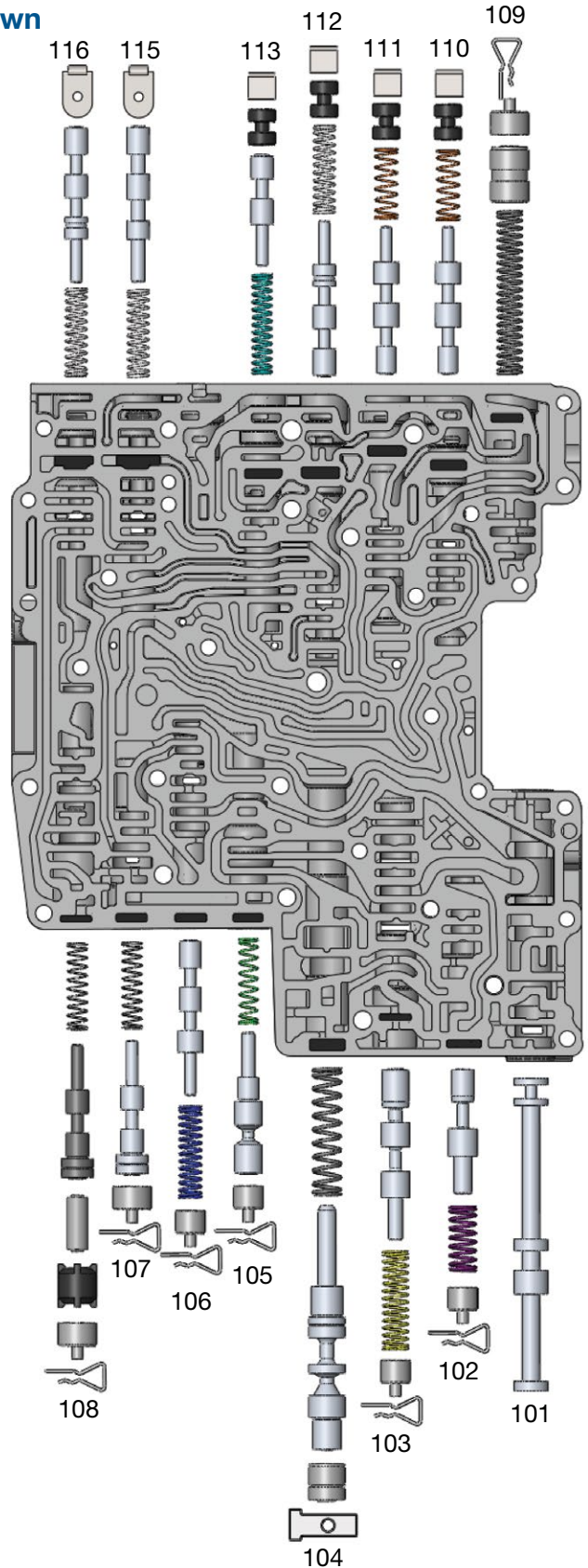
OE Exploded View

Lower Valve Body • Jaguar ZF6HP26, M-Shift Shown

NOTE: Depending upon vehicle application, the OE springs shown may not be present.

Lower Valve Body Descriptions

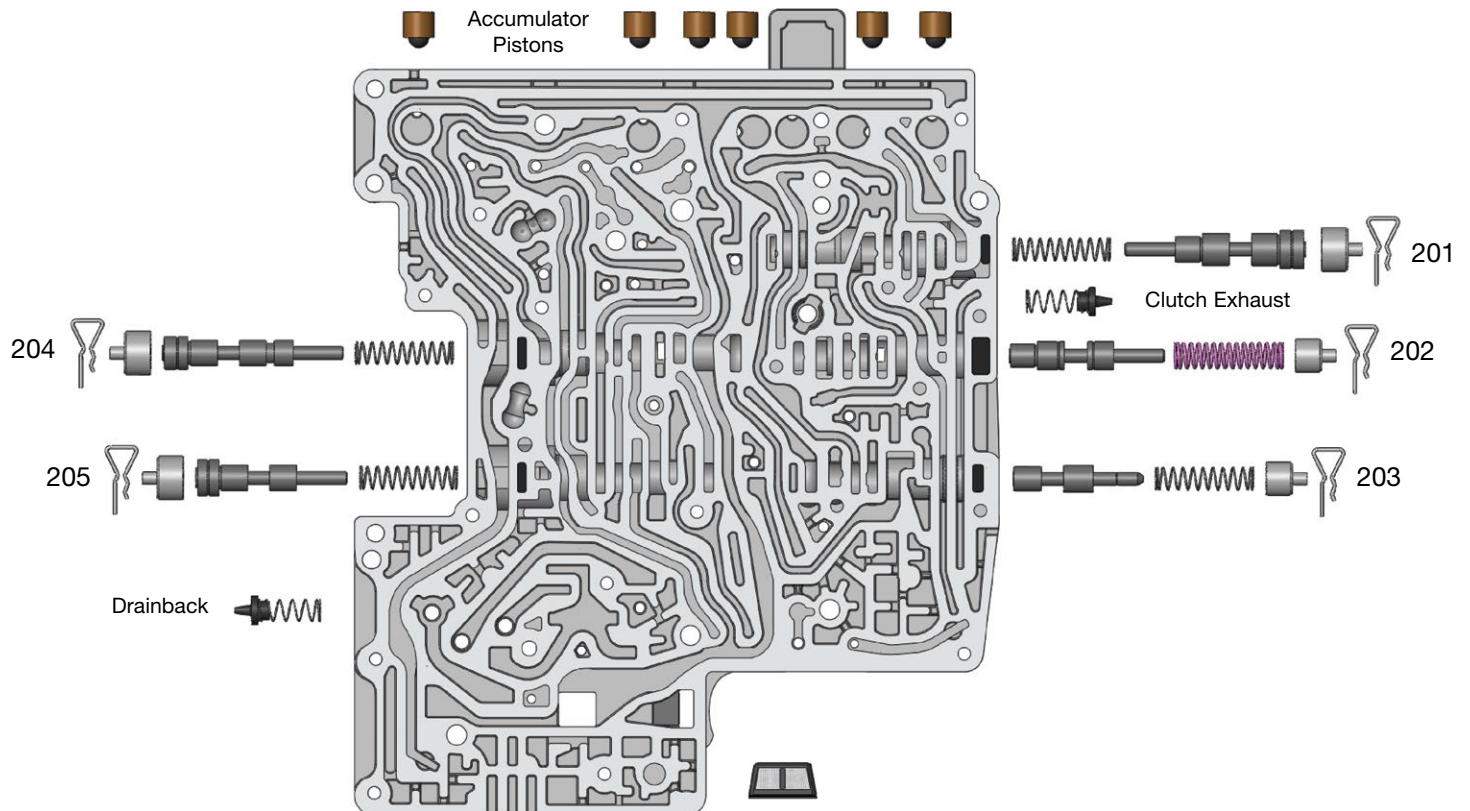
I.D No.	Description
101	Manual Valve
102	Lubrication Control Valve
103	Converter Release Regulator Valve
104	Main Pressure Regulator Valve
105	Bypass Clutch Control Regulator Valve
106	Clutch E Latch Valve
107**	Clutch E Control Pressure Regulator Valve
108	Clutch A Control Pressure Regulator Valve
109	Delay Accumulator Piston
110	Solenoid Multiplex Valve
111	Drive Enable Valve
112	Clutch D1 Latch Valve
113	Solenoid Pressure Regulator Valve
115	Clutch B Latch Valve
116	Clutch A Latch Valve



****NOTE:** ZF6HP19/26/32 (Gen. 1) applications with an 053 separator plate have significantly different valve line-ups and locations. Reference [Vacuum Test Guide for 053 plate](#) for test locations and replacement parts.

OE Exploded View

Upper Valve Body • Jaguar ZF6HP26, M-Shift Shown Here



Upper Valve Body Descriptions

I.D. No.	Description
201	Clutch B Regulator Valve
202	Clutch D2 Regulator Valve
203	Clutch D2 Latch Valve
204	Clutch C Regulator Valve
205	Clutch D1 Control Pressure Regulator Valve