

Critical Wear Areas & Vacuum Test Locations

ZIP Drop-In Zip Valve™ Parts Available

AW55-50SN-ZIP Zip Kit® Available

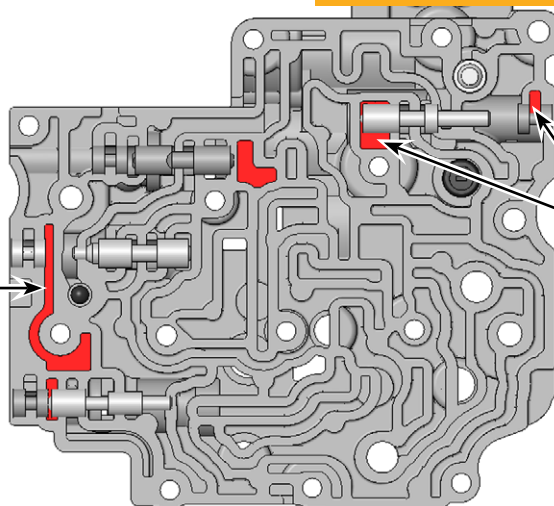
NOTE: OE valves are shown in rest position and should be tested in rest position unless otherwise indicated. Test locations are pointed to with an arrow. Springs are not shown for visual clarity. Low vacuum reading indicates wear and Sonnax parts are noted for replacement.

Front Control Valve Body AW55-50SN Shown (No exhaust style)



For specific vacuum test information, refer to individual part instructions included in kits and available at www.sonnax.com.

Click on Sonnax part numbers to see more information.



Neutral Relay Valve

- Delayed Forward
- Increased throttle required for engagement

Replace with Sonnax Part No. **59947-35K**

Requires F-59947-TL34 & VB-FIX

Solenoid Modulator Valve

- Low line pressure
- 2-3 Flare
- No 3rd, 4th or 5th
- Delayed Forward
- 5th Gear only
- No lockup

Replace with Sonnax Part No. **59947-34K**

Requires F-59947-TL34 & VB-FIX

Middle Control Valve Body • AW55-50SN Shown

Solenoid Relay Valve & Plunger/Sleeve Assembly

- No lockup
- Shift concerns
- Engine stall on engagement
- 2-3 Flare
- No 2-3
- Harsh shifts
- B5 Clutch distress

Replace with Sonnax Part No. **59947-05K**

3rd Gear Band (B4) Release Valve

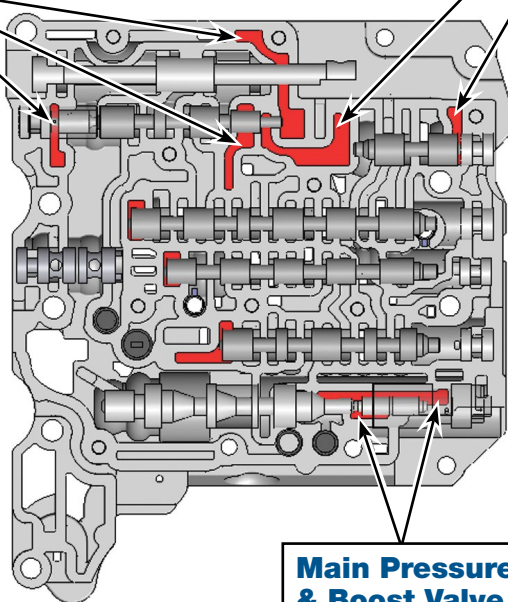
- 2-3 Flare
- 2-3 Neutral
- 3-2 Harsh
- 3-2 Neutral

Replace with Sonnax Part No. **59947-26K**

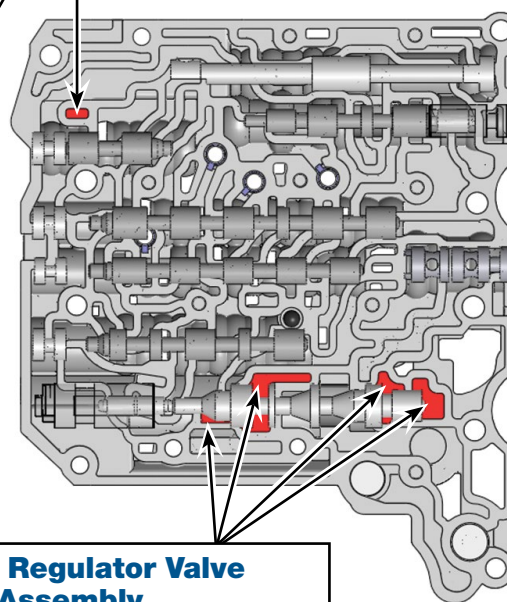
Requires F-59947-TL26 & VB-FIX

Seal the port on the opposite side of casting when testing these locations.

(Cover side)



(Rear side)



Main Pressure Regulator Valve & Boost Valve Assembly

- Soft shifts
- Delayed/Harsh shifts
- Delayed engagement
- TCC apply & release concerns

Replace with Sonnax Part No. **59947-12K**

Requires F-59947-TL12 & VB-FIX

Critical Wear Areas & Vacuum Test Locations

ZIP Drop-In Zip Valve™ Parts Available

ZIP KIT AW55-50SN-ZIP Zip Kit® Available

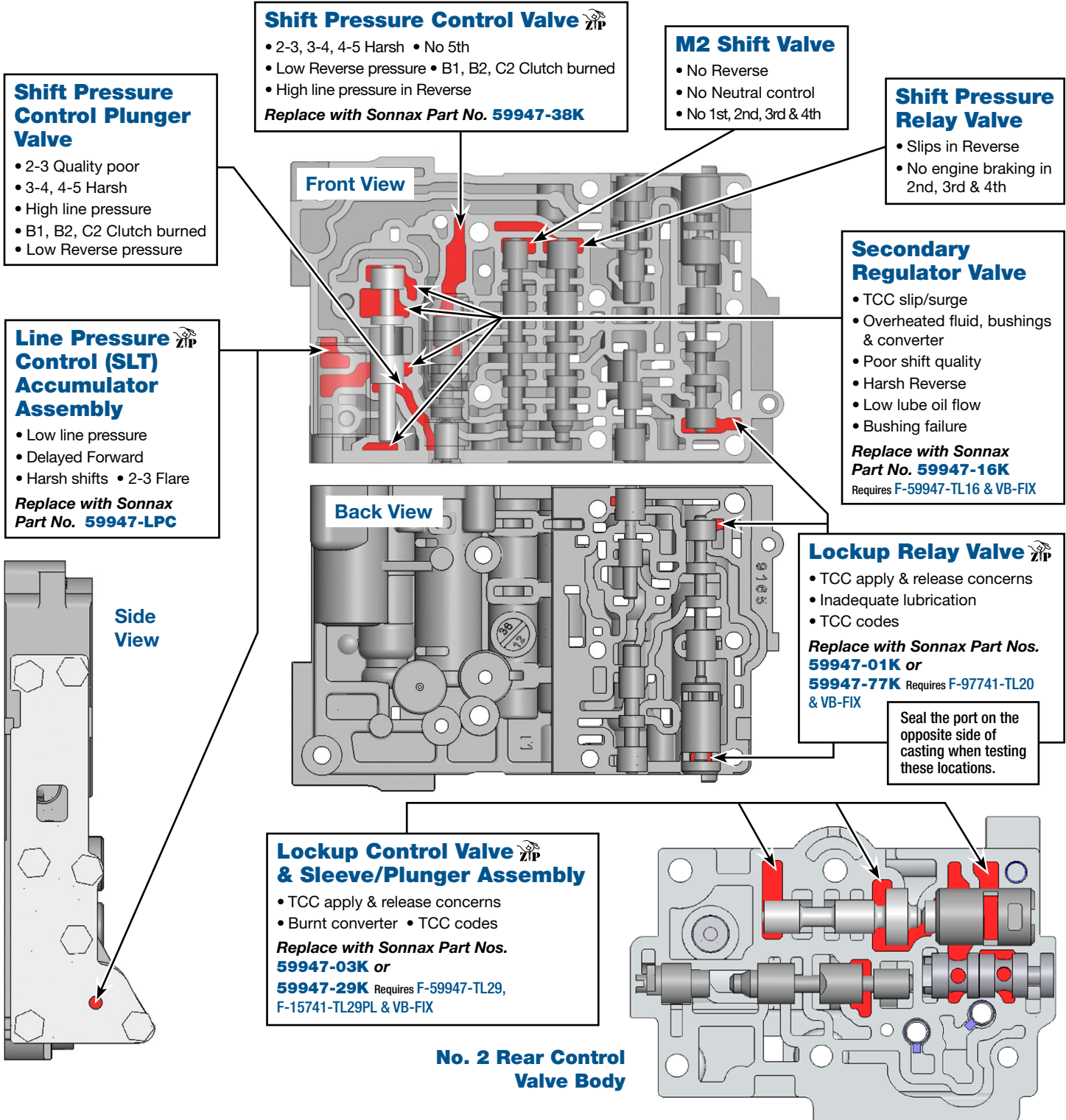
NOTE: OE valves are shown in rest position and should be tested in rest position unless otherwise indicated. Test locations are pointed to with an arrow. Springs are not shown for visual clarity. Low vacuum reading indicates wear and Sonnax parts are noted for replacement.

Rear Control Valve Body AW55-50SN Shown



For specific vacuum test information, refer to individual part instructions included in kits and available at www.sonnax.com.

Click on Sonnax part numbers to see more information.

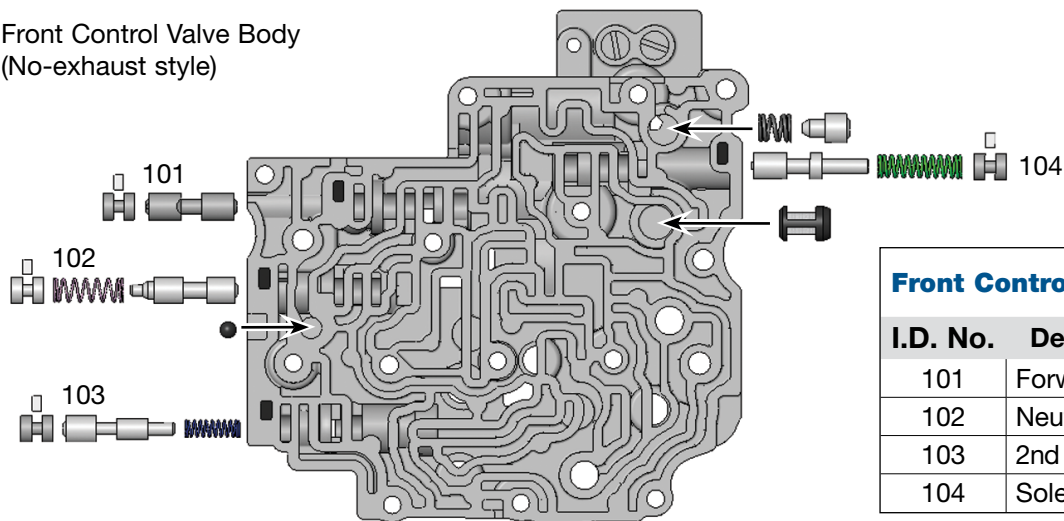


OE Exploded View

Front & Middle Control Valve Body • AW55-50SN Shown

NOTE: Depending upon vehicle application, the OE springs shown may not be present.

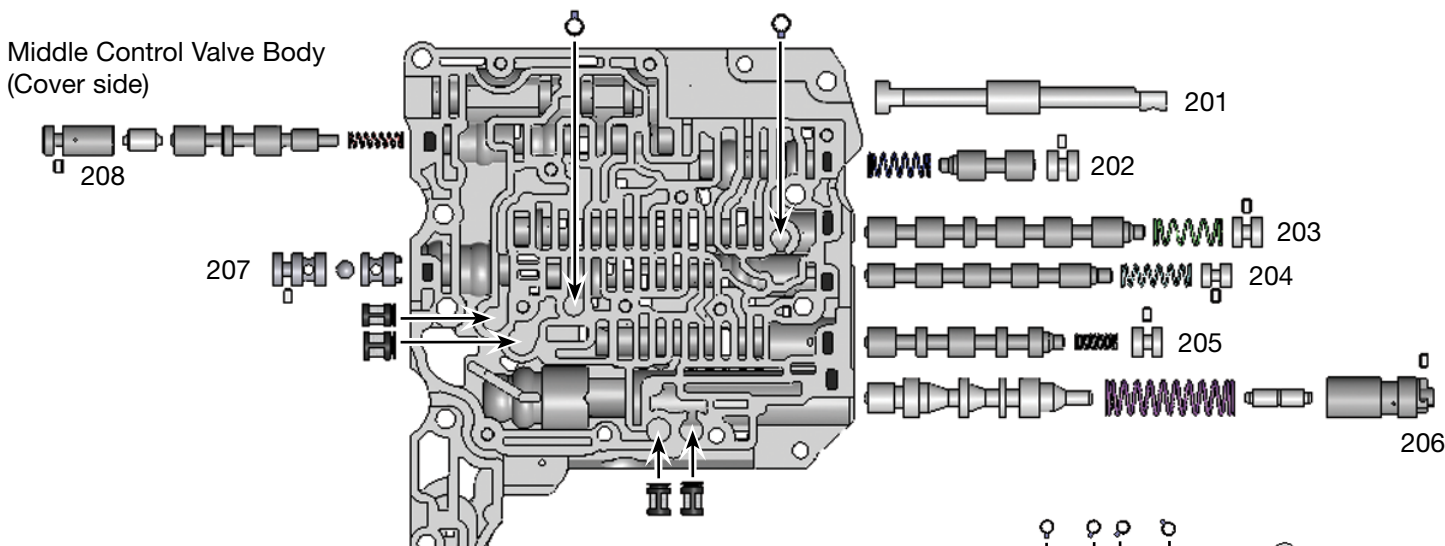
Front Control Valve Body
(No-exhaust style)



Front Control Valve Body Descriptions

I.D. No.	Description
101	Forward Clutch (C1) Control Valve
102	Neutral Relay Valve
103	2nd Coast Clutch (B1) Control Valve
104	Solenoid Modulator Valve

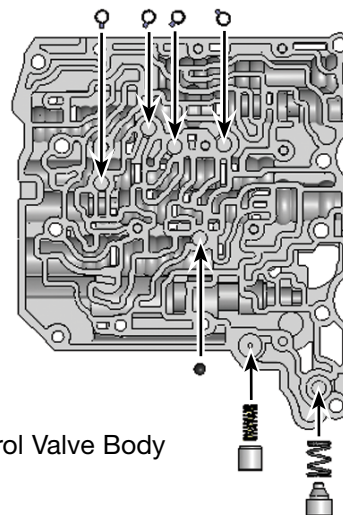
Middle Control Valve Body
(Cover side)



Middle Control Valve Body Descriptions

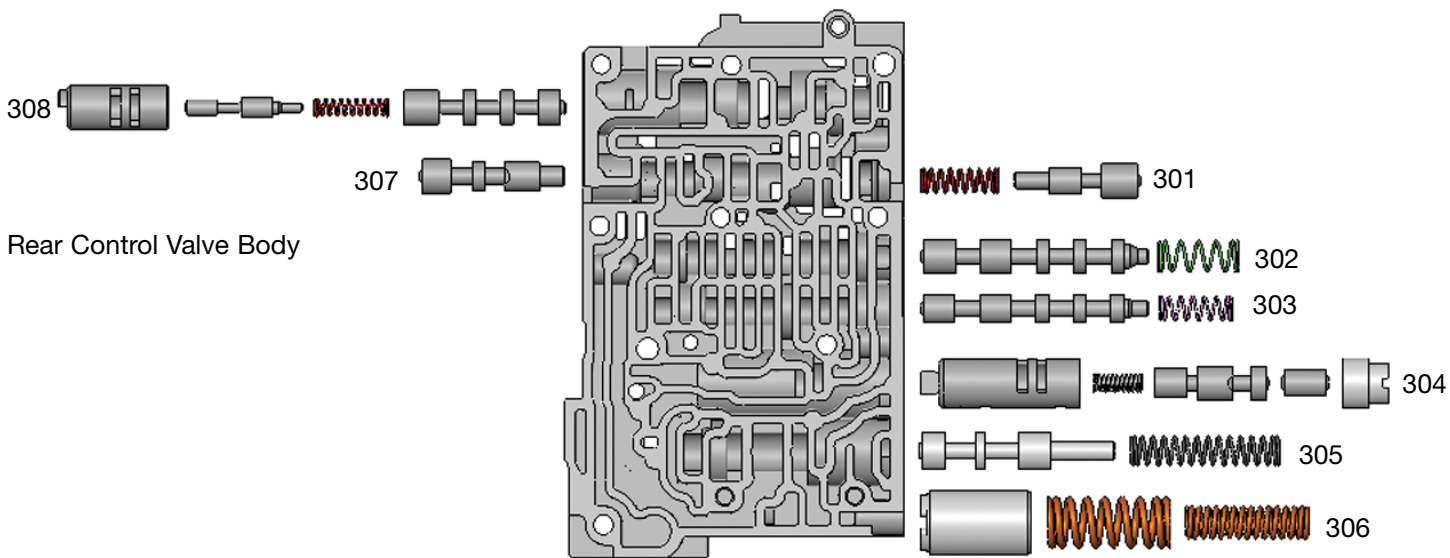
I.D. No.	Description
201	Manual Valve
202	3rd Gear Band (B4) Release Valve
203	U1 Shift Valve
204	M1 Shift Valve
205	U2 Shift Valve
206	Primary Regulator Valve & Plunger Valve Assembly
207	Reverse Shift Ball Check Valve
208	Solenoid Relay Valve & Plunger Valve Assembly

Middle Control Valve Body
(Rear side)



OE Exploded View

Rear & No. 2 Rear Control Valve Body • AW55-50SN Shown



↑ Rear Control Valve Body Descriptions	
I.D. No.	Description
301	3rd Gear Band (B4) Control Valve
302	Shift Pressure Relay Valve
303	M2 Shift Valve
304	Shift Pressure Control Valve & Plunger Valve Assembly
305	Secondary Regulator Valve
306	Line Pressure Control (SLT) Accumulator
307	1-2 Reverse Clutch (B5) Control Valve
308	Lockup Relay Valve & Plunger Valve Assembly

No. 2 Rear Control Valve Body Descriptions	
I.D. No.	Description
401	Lockup Control Valve & Plunger Valve Assembly
402	Reverse Shift Restrict Ball Check Valve
403	2nd Clutch (B2) Control Valve

