

Critical Wear Areas & Vacuum Test Locations



Drop-In Zip Valve™
Parts Available



6R140-ZIP
Zip Kit® Available

NOTE: OE valves are shown in rest position and should be tested in rest position unless otherwise indicated. Test locations are pointed to with an arrow. Springs are not shown for visual clarity. Low vacuum reading indicates wear and Sonnax parts are noted for replacement.

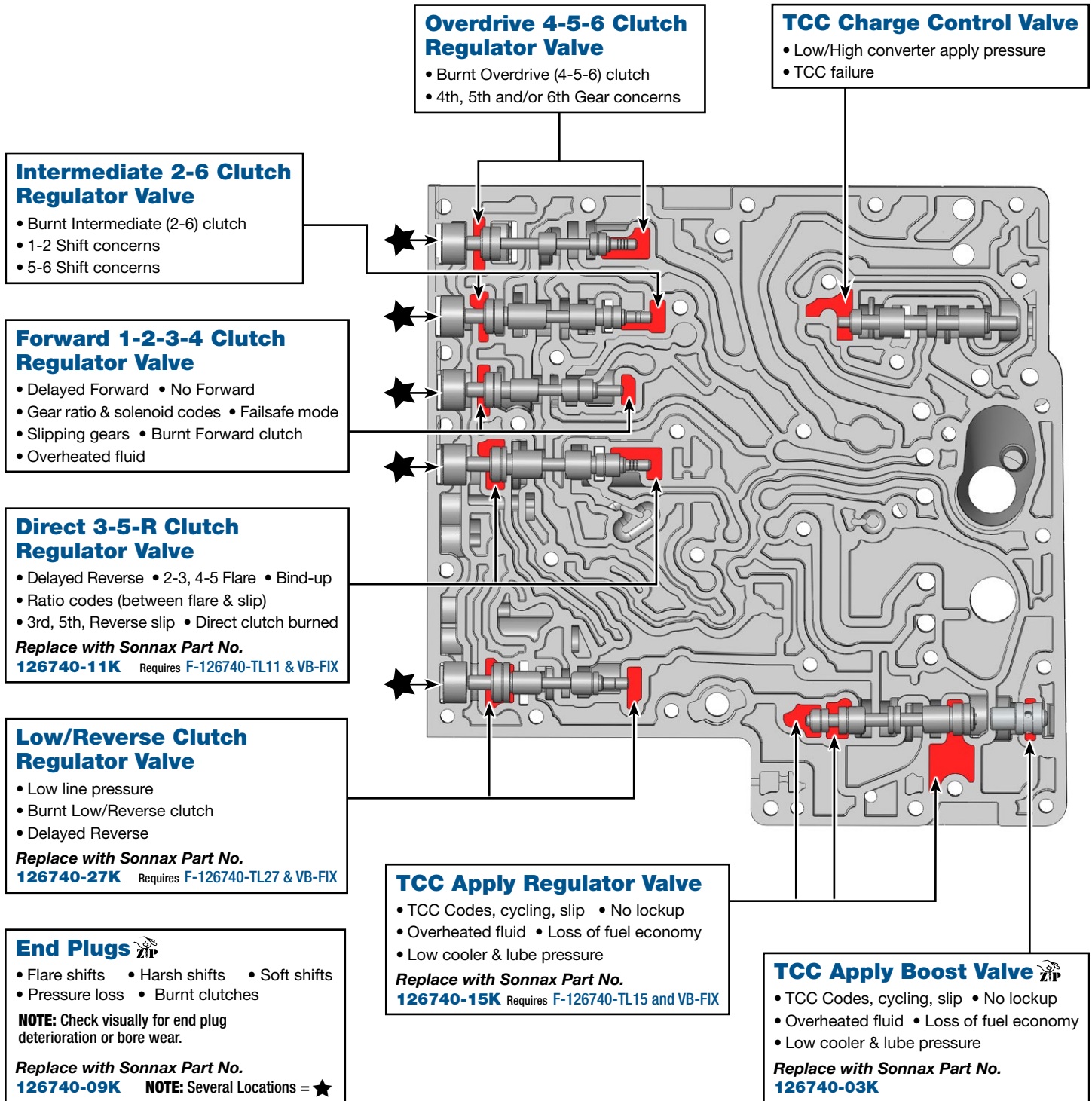
Upper Valve Body

NOTE: Worm tracks vary depending upon model year, but vacuum test locations are all the same.



For specific vacuum test information, refer to individual part instructions included in kits and available at www.sonnax.com.

Click on Sonnax part numbers to see more information.



Critical Wear Areas & Vacuum Test Locations

ZIP Drop-In Zip Valve™ Parts Available

6R140-ZIP Zip Kit® Available

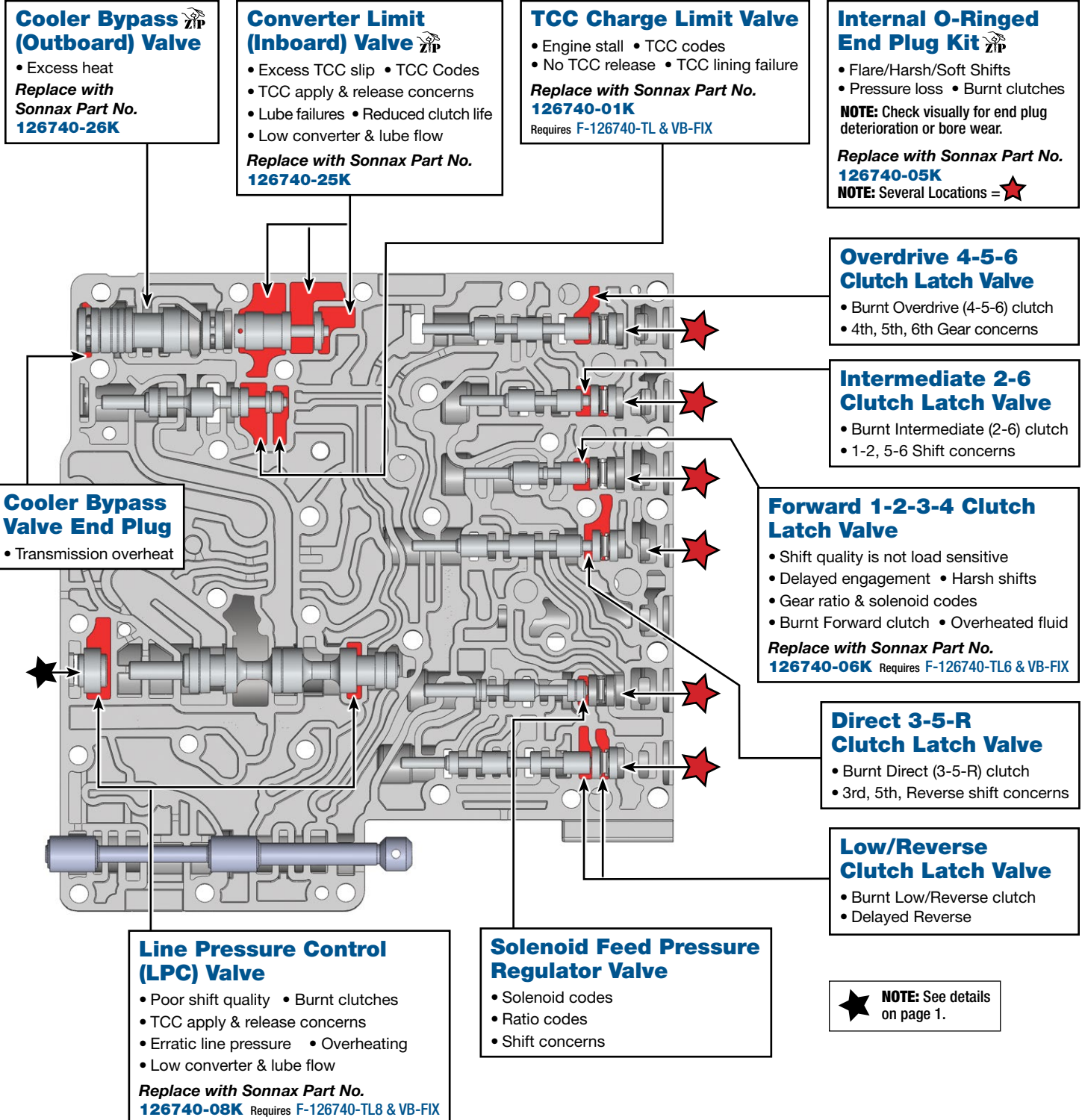
NOTE: OE valves are shown in rest position and should be tested in rest position unless otherwise indicated. Test locations are pointed to with an arrow. Springs are not shown for visual clarity. Low vacuum reading indicates wear and Sonnax parts are noted for replacement.

Lower Valve Body



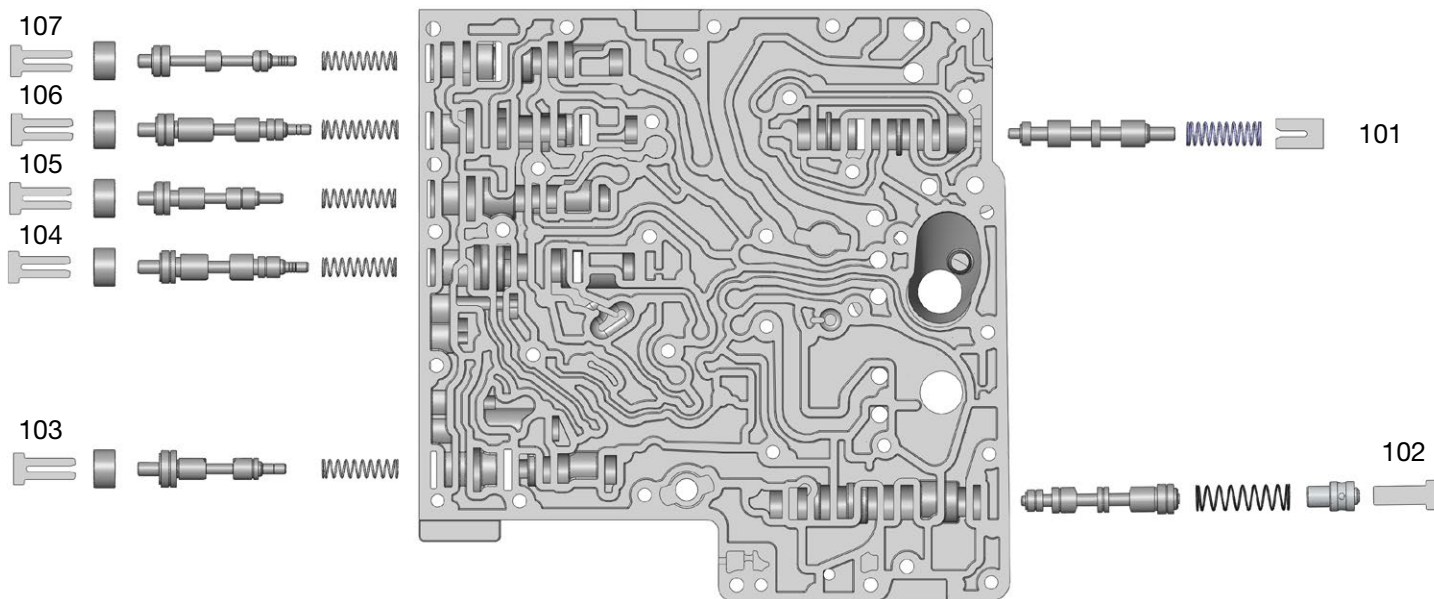
For specific vacuum test information, refer to individual part instructions included in kits and available at www.sonnax.com.

Click on Sonnax part numbers to see more information.



OE Exploded View

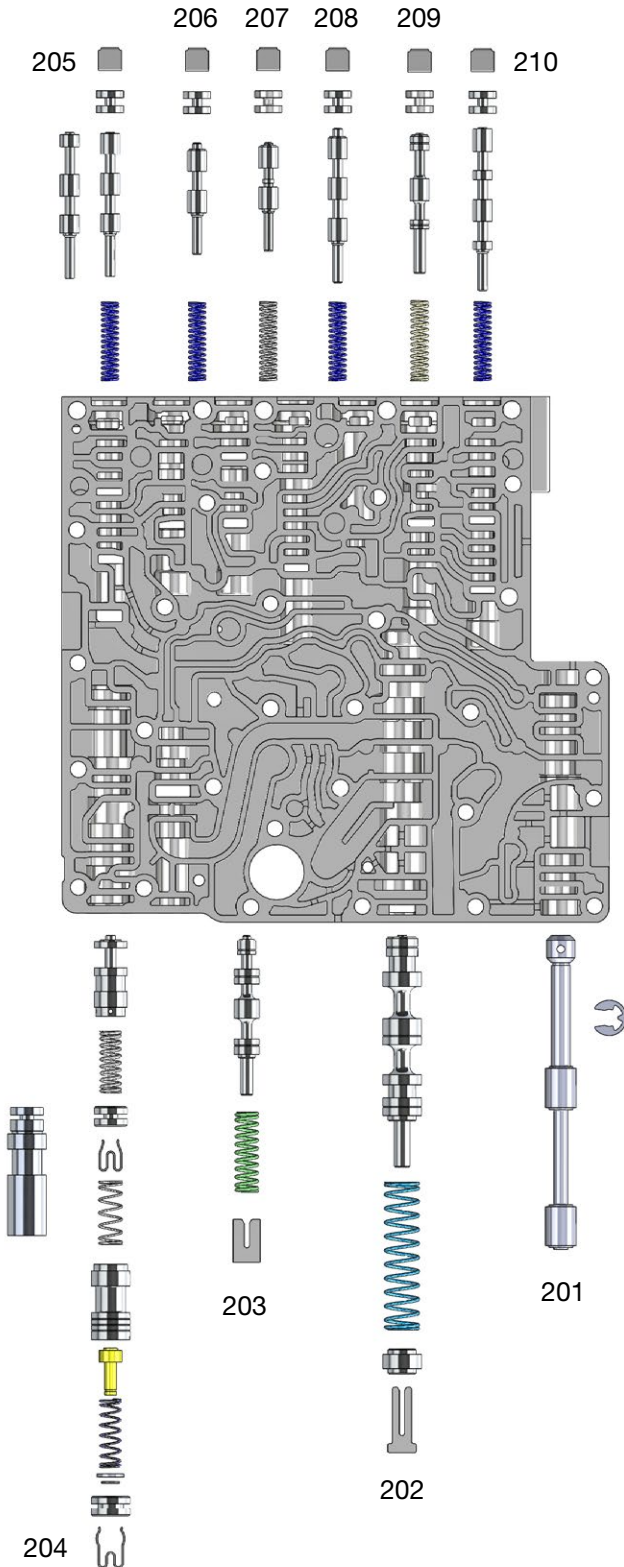
Upper Valve Body



Upper Valve Body Descriptions	
I.D. No.	Description
101	TCC Charge Control Valve
102	TCC Apply Regulator Valve
103	Low/Reverse Clutch Regulator Valve
104	Direct 3-5-R Clutch Regulator Valve
105	Forward 1-2-3-4 Clutch Regulator Valve
106	Intermediate 2-6 Clutch Regulator Valve
107	Overdrive 4-5-6 Clutch Regulator Valve

OE Exploded View

Lower Valve Body



Lower Valve Body Descriptions	
I.D. No.	Description
201	Manual Valve
202	Line Pressure Control (LPC) Valve
203	TCC Charge Limit Valve
204	Converter Limit (Inboard) Cooler Bypass (Outboard, 2011-2016) Cooler Bypass Blocker Valve (2017-later)
205	Overdrive 4-5-6 Clutch Latch Valve
206	Intermediate 2-6 Clutch Latch Valve
207	Forward 1-2-3-4 Clutch Latch Valve
208	Direct 3-5-R Clutch Latch Valve
209	Solenoid Feed Pressure Regulator Valve
210	Low/Reverse Clutch Latch Valve