

Critical Wear Areas & Vacuum Test Locations

ZIP Drop-In Zip Valve™ Parts Available

46-47RHE-ZIP Zip Kit® Available

NOTE: OE valves are shown in rest position and should be tested in rest position unless otherwise indicated. Test locations are pointed to with an arrow. Springs are not shown for visual clarity. Low vacuum reading indicates wear and Sonnax parts are noted for replacement.

Upper Valve Body • 46RE Shown



For specific vacuum test information, refer to individual part instructions included in kits and available at www.sonnax.com.

Click on Sonnax part numbers to see more information.

4-Spool Switch Valve

- Lockup shudder
- Overheated converter
- Low cooler flow
- Soft TCC apply
- Build up of release pressure during lockup

Replace with Sonnax Part Nos. 22771A-01 or 22771A-13
22771A-13 Requires 22771A-TL13

Manual Valve

- Delayed engagement
- No cooler flow in Park
- Converter bushing failure
- Overheated converter
- Forward clutch drags in Park

Replace with Sonnax Part No. 22771-09

1-2 & 2-3 Governor Plugs

- 1-2 Shuttle
- 2-3, 3-2 Oversensitive
- Difficulty in adjusting shift timing with TV linkage
- Early upshifts

Replace with Sonnax Part No. 22771-14K

Pressure Regulator Valve

- Delayed engagement
- Pressure regulator buzz
- Lube failures
- Converter bushing failure

Replace with Sonnax Part Nos. 22771A-02K or 22771A-07K
22771A-07K Requires F-22771A-TL7 & VB-FIX

Line Pressure Plug & Sleeve

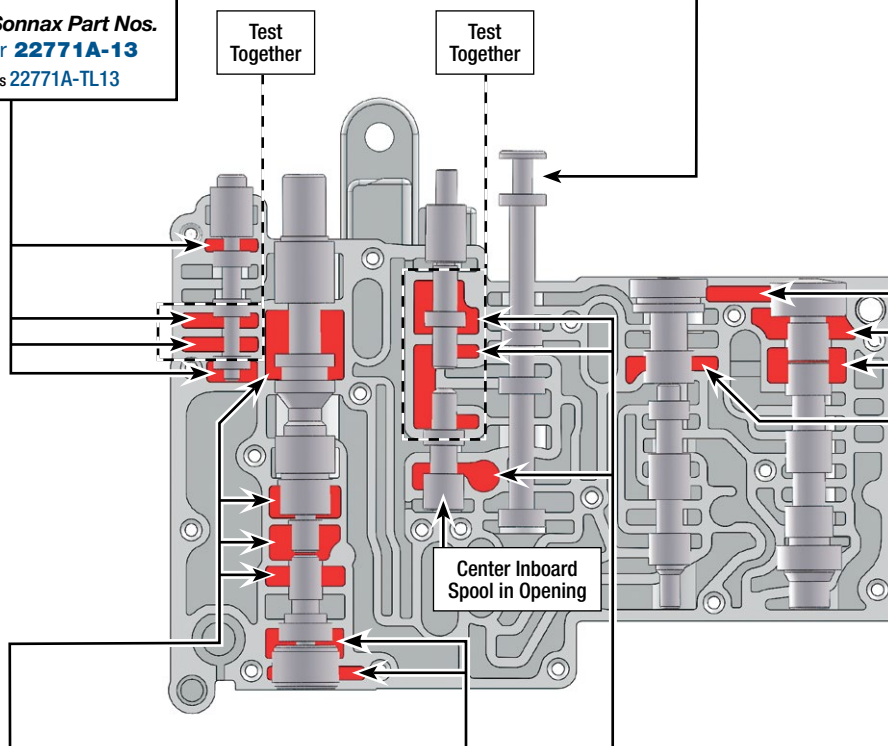
- Reverse slip
- Poor Forward & Reverse engagement
- Poor line pressure control
- Poor cooler charge at idle

Replace with Sonnax Part Nos.
22229-01K (.200" Dia.)
22229-04K (.264" Dia.)

Throttle Valve

- Shift timing concerns
- Throttle buzz
- Poor kickdown
- 2-3 Late
- 3-2 Oversensitive

Replace with Sonnax Part Nos. 22771-03K or 22771-04K
22771-04K *Requires F-22771-TL & VB-FIX



Critical Wear Areas & Vacuum Test Locations

ZIP Drop-In Zip Valve™ Parts Available

46-47RHE-ZIP Zip Kit® Available

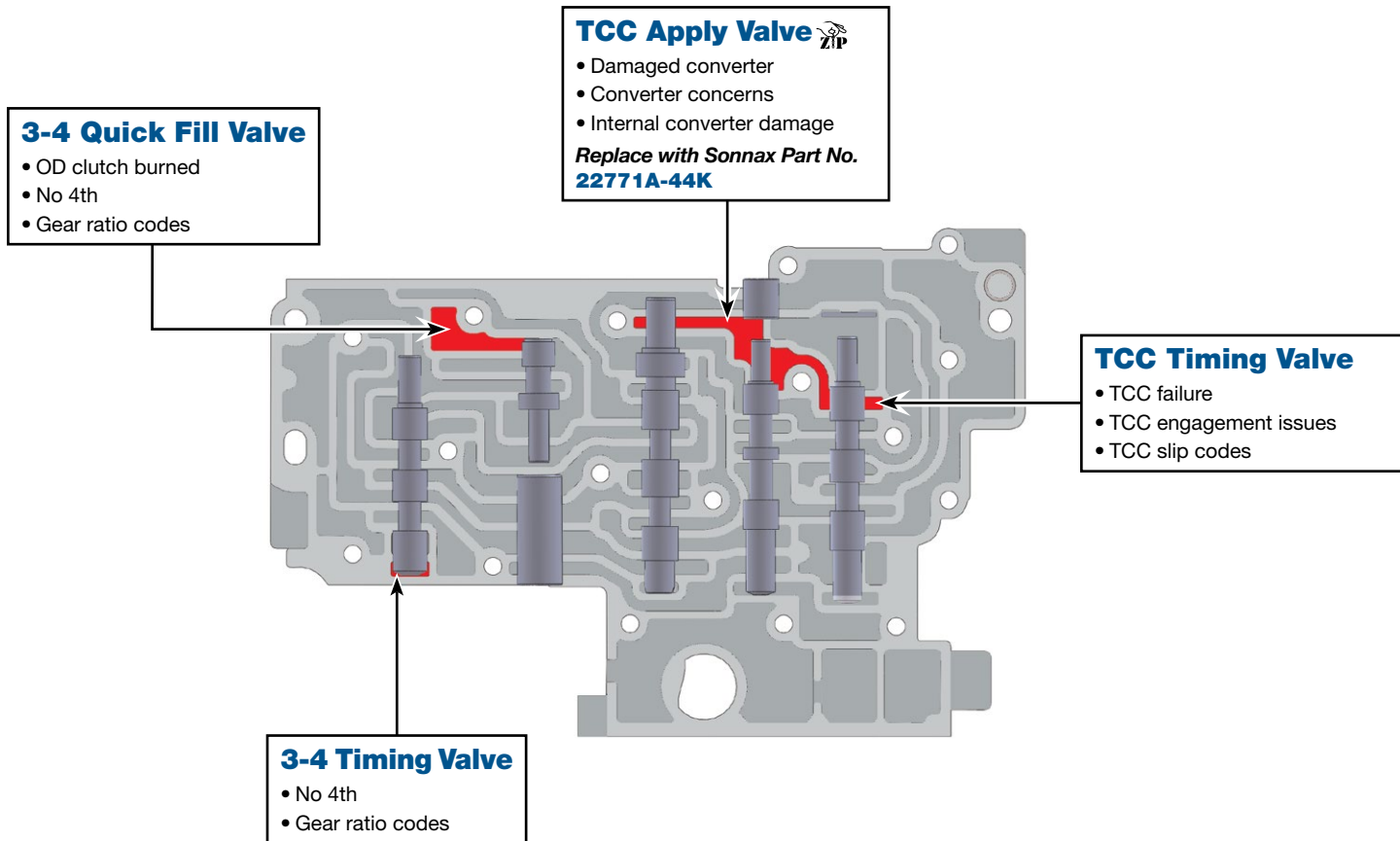
NOTE: OE valves are shown in rest position and should be tested in rest position unless otherwise indicated. Test locations are pointed to with an arrow. Springs are not shown for visual clarity. Low vacuum reading indicates wear and Sonnax parts are noted for replacement.

Lower Valve Body • 46RE Shown

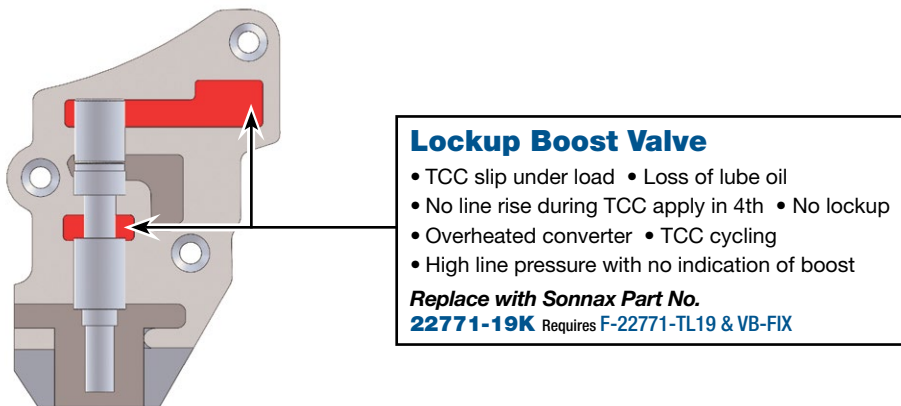


For specific vacuum test information, refer to individual part instructions included in kits and available at www.sonnax.com.

Click on Sonnax part numbers to see more information.



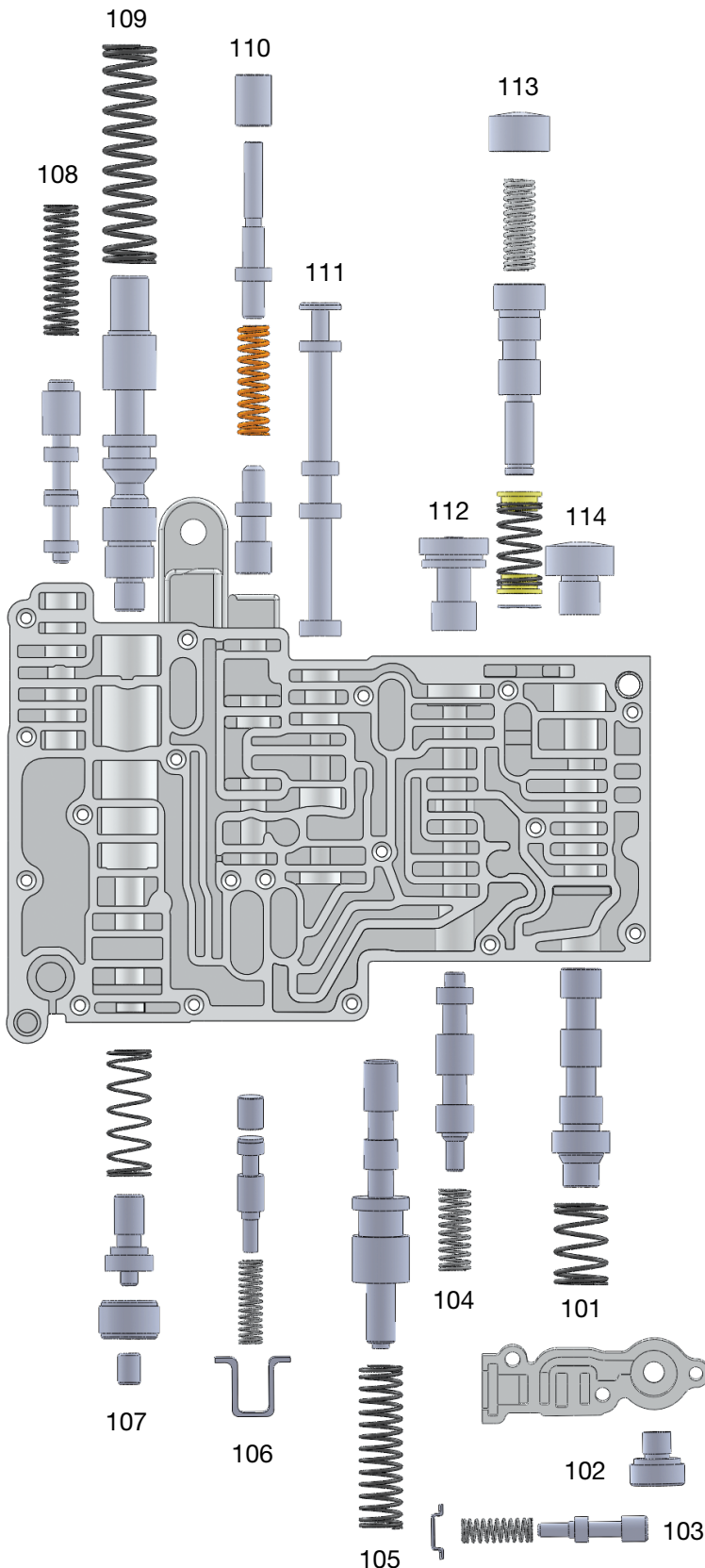
Limit Valve Housing



OE Exploded View

Upper Valve Body (Side) • 46RE Shown

Upper Valve Body Descriptions	
I.D. No.	Description
101	2-3 Shift Valve
102	2-3 Throttle Valve Plug
103	Limit Valve
104	1-2 Shift Valve
105	1-2 Shift Control Valve
106	Lockup Boost Valve
107	Throttle Pressure Valve (inboard), Line Pressure Plug & Sleeve (outboard)
108	4-Spool Switch Valve
109	Pressure Regulator Valve
110	Throttle Valve (inboard), Kickdown Valve and Sleeve (outboard)
111	Manual Valve
112	1-2 Governor Plug
113	Shuttle Valve
114	2-3 Governor Plug



OE Exploded View

Lower Valve Body • 46RE Shown

Lower Valve Body Descriptions

I.D. No.	Description
201	3-4 Quick Fill Valve
202	3-4 Timing Valve
203	3-4 Shift Valve
204	Torque Converter Clutch Apply Valve
205	Torque Converter Clutch Timing Valve

