

Critical Wear Areas & Vacuum Test Locations



NOTE: OE valves are shown in rest position and should be tested in rest position unless otherwise indicated. Test locations are pointed to with an arrow. Springs are not shown for visual clarity. Low vacuum reading indicates wear and Sonnax parts are noted for replacement.

Main Valve Body • '06-'09 Years Only



For specific vacuum test information, refer to individual part instructions included in kits and available at www.sonnax.com.

Click on Sonnax part numbers to see more information.



NOTE: Castings, valves and worm tracks vary between versions as do vacuum test locations.

Exhaust Backfill Valve
 • Flare shifts • Long shifts • Delayed shifts
 Replace with Sonnax Part No. **37000-17K**

Main Control Relief Valve
 • Shift concerns
 • Loss of shift solenoid control pressure
 Replace with Sonnax Part No. **37000-19** Requires F-37000-TL19 & VB-FIX

Block: Port on back.

Block: Port on back.

Trim A Valve (Right, Inboard)
Trim B Valve (Left, Inboard)
 • Premature clutch wear
 • Inability to alter clutch apply pressure curve
 Replace with Sonnax Part No. **37000-12K** Requires 37000-TL12
Note: For years '00-'09 only.

Test: Test these two together.

Test: Test these two together.

Solenoid "F" Trim Valve/TCC PCS Solenoid Valve
 • Overheating
 • Code P0741 • TCC surge
Note: For years '00-'05 only.
 Replace with Sonnax Part No. **37000-03** F-Trim Valve End Sleeve
37000-30K Oversized F-Trim Valve Kit Requires F-37000-TL30 & VB-FIX

Trim A Gain Valve (Right, Outboard)
Trim B Gain Valve (Left, Outboard)
 • Premature clutch wear
 • Shift concerns
Note: For years '00-'09 only.
 Replace with Sonnax Part No. **37000-24K** Requires F-37000-TL24 & VB-FIX

Critical Wear Areas & Vacuum Test Locations



NOTE: OE valves are shown in rest position and should be tested in rest position unless otherwise indicated. Test locations are pointed to with an arrow. Springs are not shown for visual clarity. Low vacuum reading indicates wear and Sonnax parts are noted for replacement.

Shift Valve Body • '06-'09 Years Only



For specific vacuum test information, refer to individual part instructions included in kits and available at www.sonnax.com.

Click on Sonnax part numbers to see more information.



NOTE: Castings, valves and worm tracks vary between versions as do vacuum test locations.

Manual Valve

- Low line pressure • Delayed Drive
- Delayed Reverse

Replace with Sonnax Part No.
37000-29K Manual Valve Selector Pin
37000-28K Oversized Manual Valve Kit Requires F-37000-TL28 & VB-FIX

Note: Position end of valve flush with casting for test.

Solenoid "D" Shift Valve/ Shift Solenoid "2" Shift Valve

- Burnt C5 clutch
- Delayed engagements

Test: Test these two together.

Solenoid "E" Shift Valve/Shift Solenoid "3" Shift Valve

- Bodes P0872 & P1711
- Pressure switch stuck on
- Failsafe mode
- 3rd Gear starts

Note: For years '00-'09 only.

Replace with Sonnax Part No.
37000-15K Requires F-37000-TL15 & VB-FIX

Test: Test these two together.

Test: Test these two together.

Note: Seal solenoid when testing.

Test: Test these two together.

Main Control Valve

- Solenoid performance codes
- Shift concerns

Solenoid "C" Shift Valve/ Shift Solenoid "1" Shift Valve

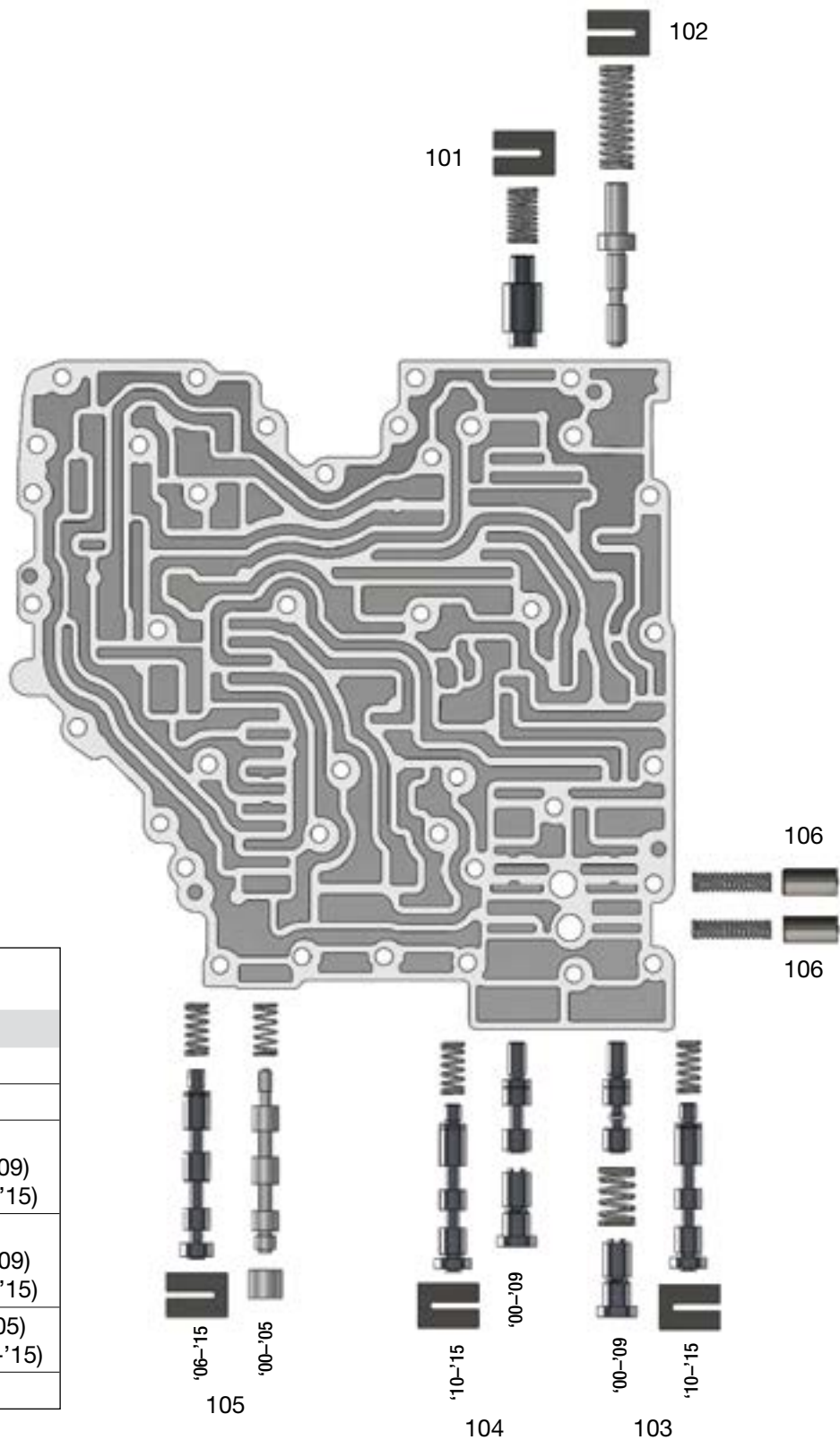
- 3-4 Concerns

OE Exploded View

Main Valve Body

NOTE: Depending upon vehicle application, the OE springs shown may not be present.

NOTE: Bore components are '00-'15 unless otherwise noted.
Worm tracks vary between versions, '06-'09 Shown.



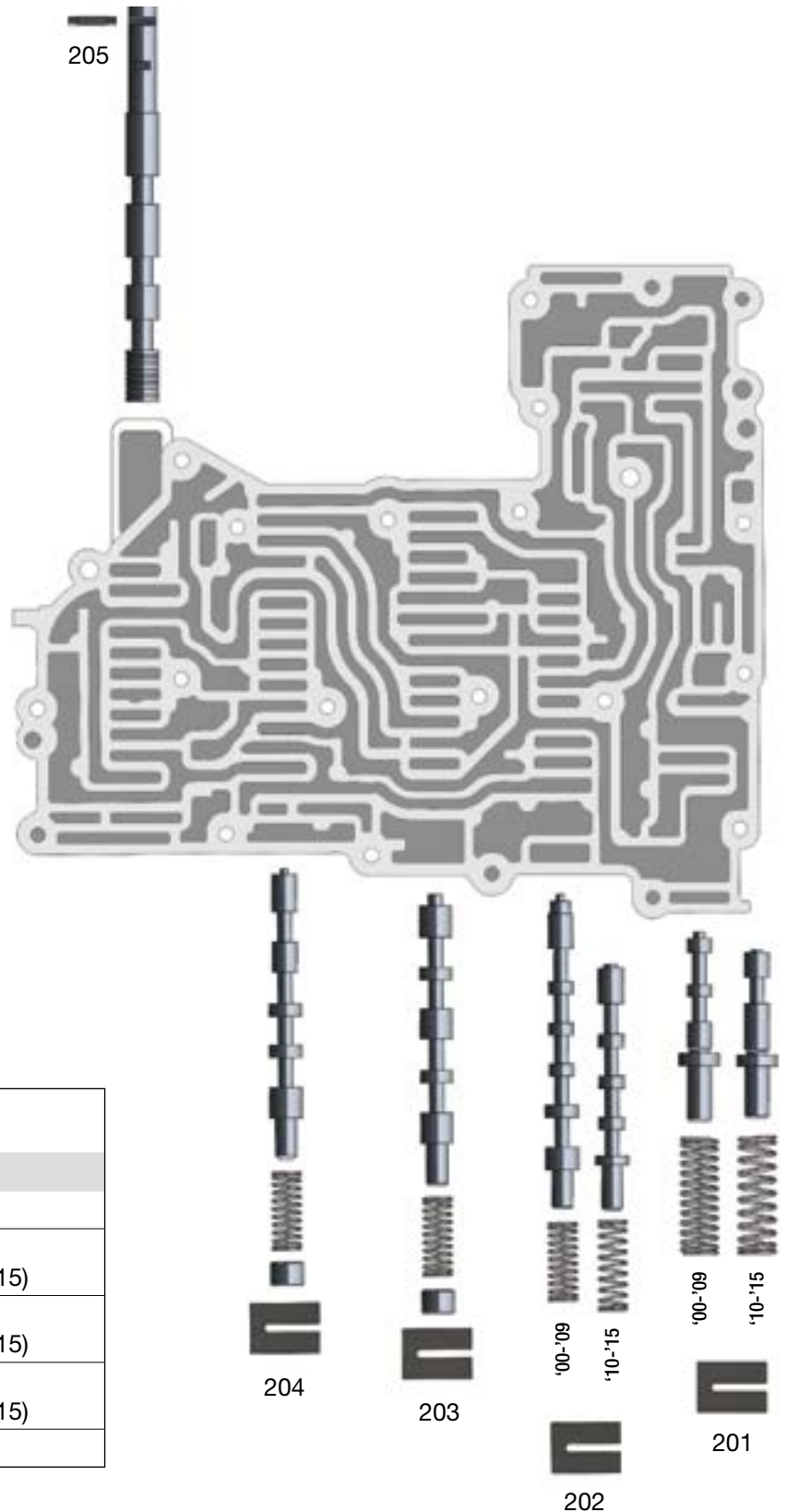
Main Valve Body Descriptions	
I.D. No.	Description
101	Exhaust Backfill Valve
102	Main Control Relief Valve
103	Trim A Valve (Inner '00-'09) Trim A Gain Valve (Outer '00-'09) Pressure Control Valve 1 ('10-'15)
104	Trim B Valve (Inner '00-'09) Trim B Gain Valve (Outer '00-'09) Pressure Control Valve 2 ('10-'15)
105	Solenoid "F" Trim Valve ('00-'05) TCC PCS Solenoid Valve ('06-'15)
106	Accumulators

OE Exploded View

NOTE: Depending upon vehicle application, the OE springs shown may not be present.

Shift Valve Body

NOTE: Bore components are '00-'15 unless otherwise noted.
Worm tracks vary between versions, '06-'09 Shown.



Shift Valve Body Descriptions	
I.D. No.	Description
201	Main Control Valve
202	Solenoid "C" Shift Valve ('00-'09) Shift Solenoid "1" Shift Valve ('10-'15)
203	Solenoid "E" Shift Valve ('00-'09) Shift Solenoid "3" Shift Valve ('10-'15)
204	Solenoid "D" Shift Valve ('00-'09) Shift Solenoid "2" Shift Valve ('10-'15)
205	Manual Valve